



CO.LAB x DESIGN

—
PORTFOLIO

CONTENT

STUDIO

OUR ETHOS

ABOUT US

MEET THE TEAM

WORKING WITH US

—

DESIGN

SPACE PLANS

VISUALS / PROJECT PHOTOS

Finance

Retail & Hospitality

Tech

Miscellaneous

Co-working

Landlord Works

CONCEPT SKETCHING

—

TECHNICAL DESIGN

TECHNICAL DRAWINGS PACK

—

VIDEOS

OUR ETHOS

We believe the strongest ideas emerge through partnership where every voice adds value. With a thoughtful and strategic approach, we craft concepts that are not only meaningful and design-led, but grounded in real-world viability, ensuring every outcome is both inspiring and deliverable.

CO. LLABORATIVE

We strongly believe in collaborating with our clients to create a bespoke experience that works both aesthetically and functionally for your business. After all, you'll be occupying the space for the foreseeable future; so it needs to work for you, not us.

CO. NSIDERED

Detail is key to a successful project. From the earliest stages, we involve our extended technical design team in Brazil to ensure every element is thoughtfully considered from architectural, technical, and functional perspectives.

CO. NCEPTUAL

We place strong emphasis on brand awareness to develop a concept that drives the design. Through our brand discovery process, we quickly gain a clear understanding of your business, allowing us to craft a narrative that informs and shapes the design. This ensures the outcome feels cohesive and that your budget is used effectively.

CO. MMERCIAL

With backgrounds in both Architecture and Design & Build, Matt and Richard offer a unique combination of brand insight, attention to detail, and high-quality design—balanced with a clear understanding of budget and time constraints.

ABOUT CO.LAB X DESIGN

Co.Lab x Design was born from years inside a system that wasn't working.

Since 2008, the industry revealed a pattern: high pressure, rising costs, and teams stretched to burnout just to keep pace.

Winning work wasn't the real challenge; sustaining people was.

That tension sparked a different idea: a more flexible, collaborative way of working, one that could support architects and designers when they needed it most, without the weight of constant overhead.

Through experimentation, new systems, and global collaboration, a smarter workflow began to take shape; connecting design to delivery seamlessly.

Along the way, Matt became a pivotal part of that journey.

As the very first client, he brought not only consistent work but insight and challenge, helping refine processes and shape the studio's direction.

In 2025 he joined as a founder and Design Director, introducing a strong creative voice.

As the vision grew, so did the team.

Many talented individuals joined along the way, each contributing to what Co.Lab x Design is today.

In 2021, that vision became reality: built on collaboration, shaped by partnership, and driven by a more resilient, connected way to design.

And as we continue to evolve, we look forward to pushing boundaries, strengthening partnerships, and shaping the future of how design is delivered.

MEET THE TEAM

We are a collective of designers and interior designers working across the UK and Brazil, bringing together diverse perspectives, skills, and cultural influences. This international setup allows for extended working hours, increased flexibility, and a highly efficient workflow.

RICHARD NIEMEYER

TECHNICAL DIRECTOR + FOUNDER

Richard has gained a deep understanding technical design knowledge over the past 20 years working between Brazil and London. He has worked in both architecture and design & build, therefore has a strong balance between level of detail, commercial awareness and timescales.



JOE WOOLLARDS

ASSOCIATE

With over a decade of experience in the design and build sector, Joe is a RIBA Part II architecture graduate who thrives in fast-paced environments. He balances precision with speed, maintaining design momentum while ensuring technical accuracy, and consistently delivers projects on time and in line with client expectations.



MATT COLLERAN

DESIGN DIRECTOR + FOUNDER

With nearly 20 years of experience in both the Design & Build and Architecture industries across New York and London, Matt brings a well-rounded understanding of client requirements—balancing conceptual and brand-driven vision with commercial practicality.



FABIANA NIEMEYER

ACCOUNT MANAGER

With 25 years of extensive experience in office administration across various markets, including wholesale and retail, Fabiana has developed a strong background in administrative and support services. Having worked in South America and Europe, she has recently gained valuable experience in the construction industry, supporting company accounts and administration services.



SIMONA RIZZO

DESIGN DIRECTOR

With over 15 years of experience across the UK and Europe, spanning both traditional and Design & Build sectors, Simona brings a balanced and versatile approach to design. She helps clients realise their vision through a combination of big-picture thinking, technical expertise, and strong commercial awareness.



UNITED KINGDOM

MEET THE TEAM



ROB SEVERO PEREIRA

BIM ARCHITECT
PROJECT MANAGER



AMANDA KASBURGER

BIM ARCHITECT



DENIS MARIANO

TECHNICAL DESIGNER
BIM ARCHITECT



**BRENDA ECKEL
MACHADO**

ARCHITECT AND URBANIST



LUIS BILHAR

BIM ARCHITECT



**TIAGO GASSEN
BERNHARD**

BIM ARCHITECT
TECHNICAL MANAGER



LUIZ ALVARENGA

BIM ARCHITECT



ARTHUR CUNHA

TECHNICAL DESIGNER

BRAZIL



BACK TO MENU

WORKING WITH US

From Concept to Completion — Or Anywhere In Between

We offer a flexible service that adapts to your needs and timelines, giving you full control over how you engage with us; supported by a streamlined, stress-free process.

OPTION 01

END-TO-END SERVICE

We deliver a seamless end-to-end service, managing every stage from concept to completion with minimal disruption and complete continuity.

OPTION 02

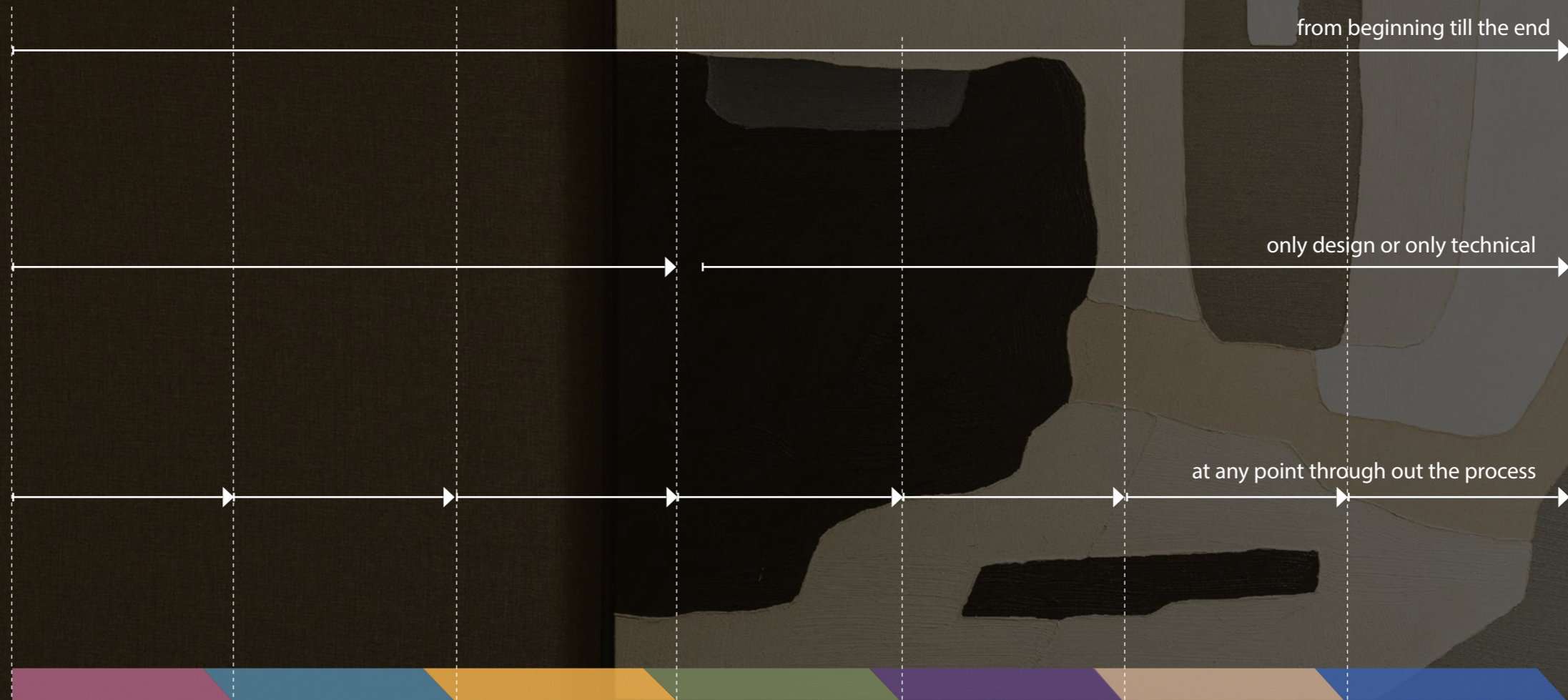
TARGETED DELIVERY

We offer a flexible service, developing either design or technical packages across selected RIBA stages, ensuring clarity, precision, and a tailored approach to each project.

OPTION 03

INDIVIDUAL STAGES

We deliver a seamless end-to-end service, managing every stage from concept to completion with minimal disruption and complete continuity.



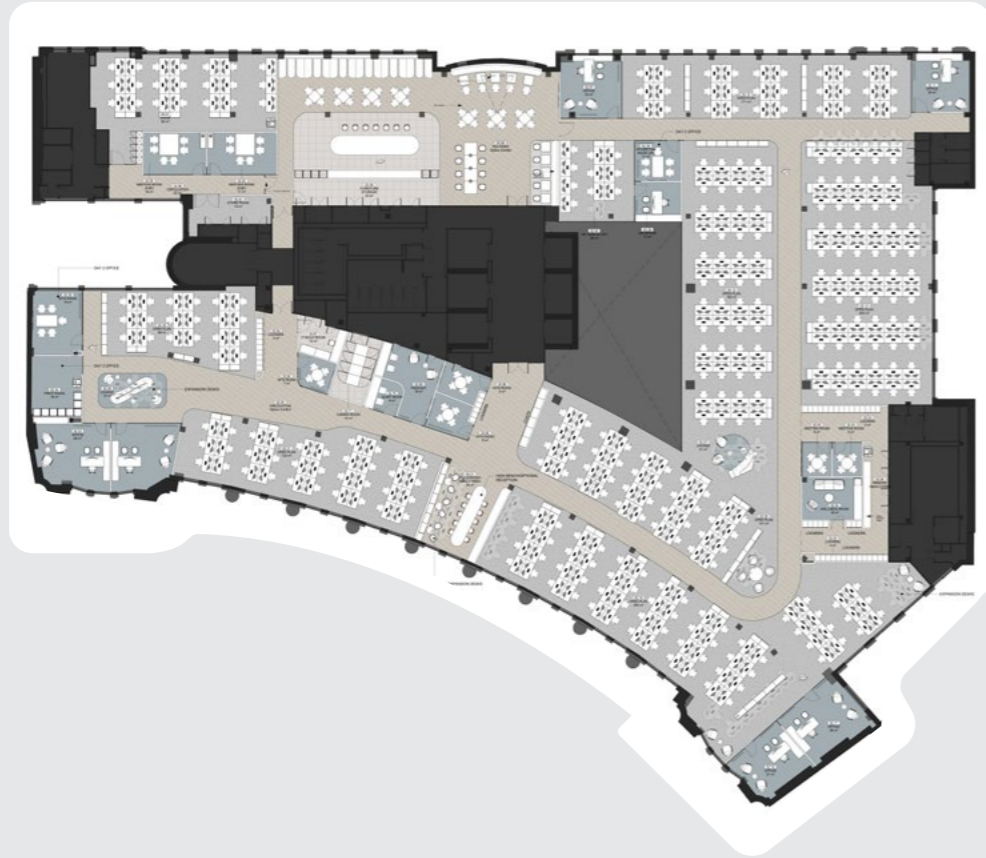
STAGE 1	STAGE 2	STAGE 3	STAGE 4	STAGE 5	STAGE 6	STAGE 7
Preparation & briefing	Concept Design	Spatial Coordination	Technical Design	Manufacturing & Construction	Handover	Use
<ul style="list-style-type: none"> Develop the brief Attend client's meetings Pitch design Identify key constrains Site analysis Feasibility studies Sketch scheme 	<ul style="list-style-type: none"> Concept design Initial sketches Coordinate design with QS Look&Feel boards Initial 3d views 	<ul style="list-style-type: none"> Test fits Materials selection Visuals Walkthroughs Video animations 	<ul style="list-style-type: none"> Technical drawings Site visits Matterport 	<ul style="list-style-type: none"> Site coordination Site meetings Clients meeting 	<ul style="list-style-type: none"> As built drawings 	

DESIGN



SPACE PLANNING

Whilst every project is unique in scope and complexity, this collection provides a clear indication of how project size relates to production timelines. It illustrates our ability to scale our approach efficiently, adapting workflows, resources, and delivery speed, while maintaining a consistent standard of quality and creativity across all projects.



12

Production time: 2 days

Size: 25k sq ft



Production time: 1.5 days

Size: 15k sq ft



Production time: 1 day

Size: 9k sq ft



Production time: 2 days

Size: 22k sq ft

VISUALS/PROJECT PHOTOS

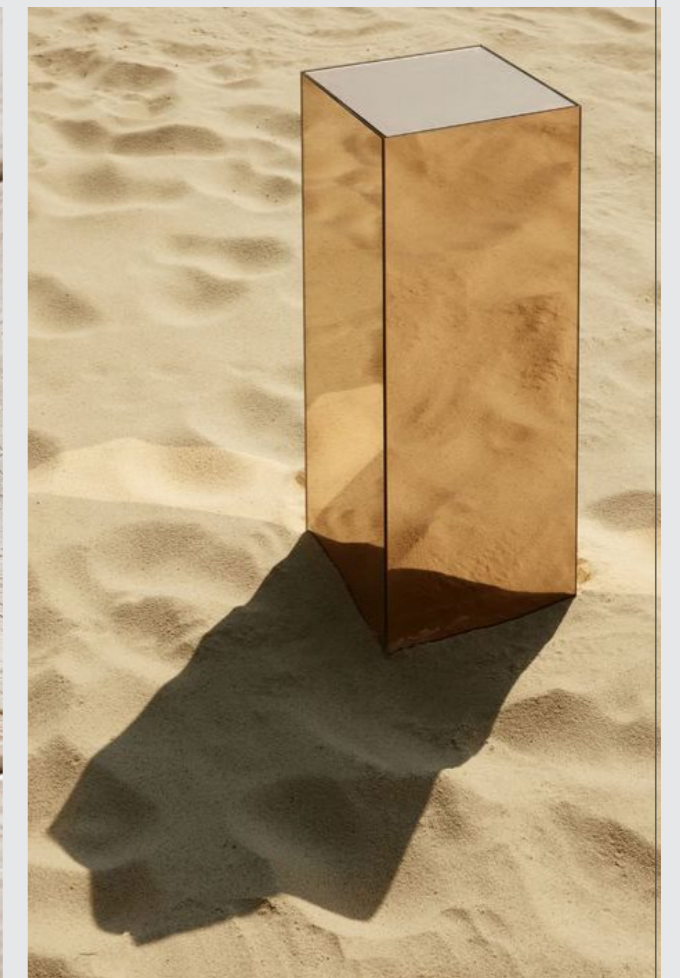
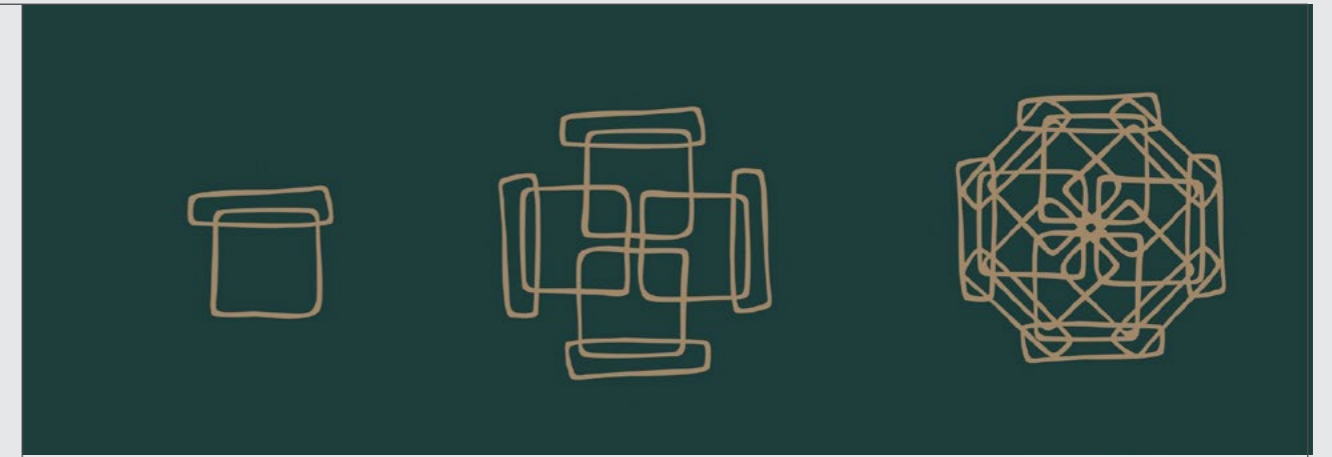




FEATURE STAIRCASE

SECTOR

FINANCE



TAULA CAPITAL

Taula's new London headquarters offered an opportunity to work closely with their branding team to develop a concept that subtly shaped the design direction and set a global standard for their offices.

11K.SQ.FT.

25 Sackville Street

CONCEPT. Volatility

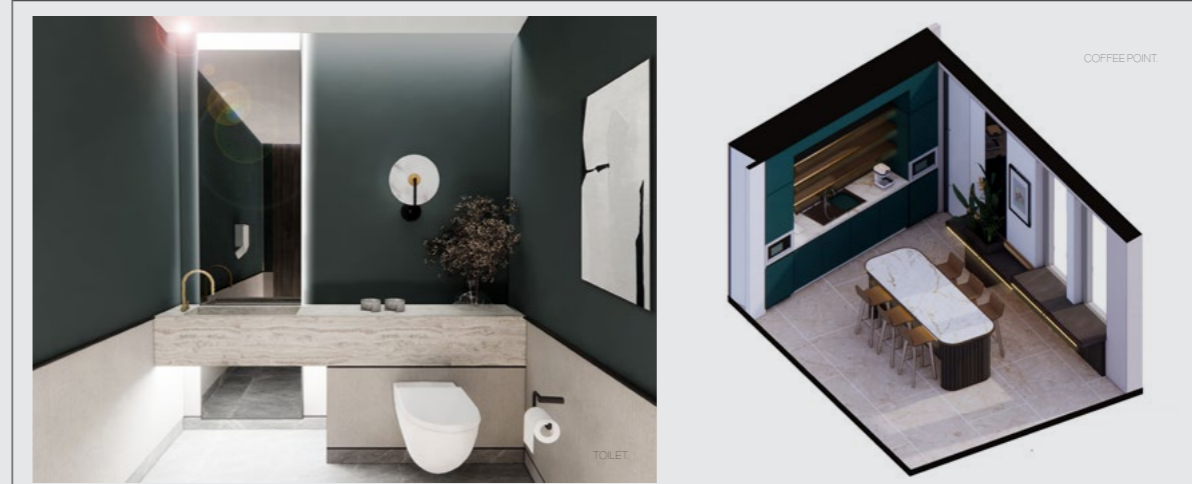
We worked closely with Taula's brand team to deeply understand their ethos, and two key insights stood out. First, the name "Taula" originates from a prehistoric site in Menorca, Spain—where, much like Stonehenge, humans shaped and controlled natural forms to create a ritual space. This idea resonated with Taula's strategic approach of harnessing volatility in the markets to generate wealth. Both themes informed the core design concept of Harnessing Volatility. This aesthetic is subtly expressed through the use of natural forms that are intentionally shaped and refined to create an environment that serves its users effectively.

TAULA CAPITAL

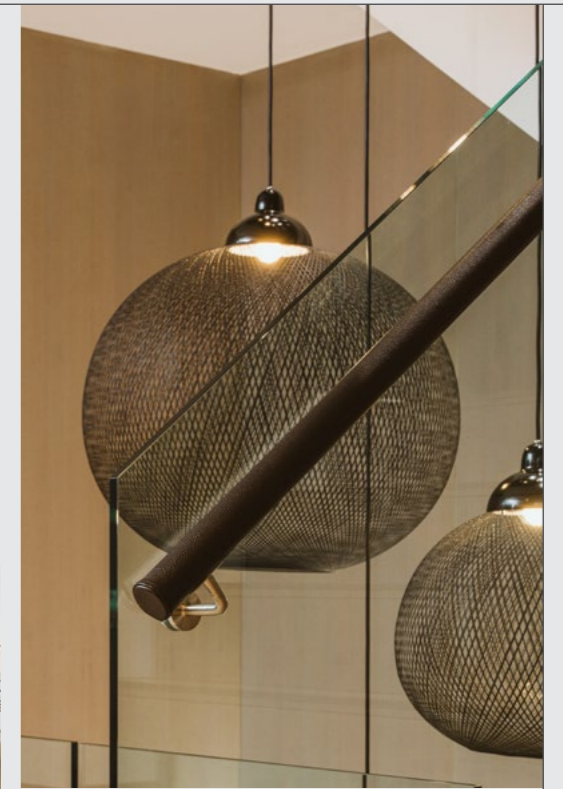




*Note: This project has just finished on site and we are awaiting photography. Site visits are possible upon request.



*Note: This project has just finished on site and we are awaiting photography. Site visits are possible upon request.



ANTIN INFRASTRUCTURE

We've been working with Antin Infrastructure since 2017 to continuously optimise and expand their offices at 14 St. George Street in Mayfair. As the company has grown and evolved, we've regularly reassessed and adapted the workspace to meet their changing needs.

25K SQ. FT.

14, St. George Street

2017 - 2025

CONCEPT. Support Structure

Antin's business centres on infrastructure investment, and as a team, they place strong emphasis on supporting and nurturing growth from within. This creates a uniquely family-friendly atmosphere—something we found rare in the industry. Our design concept subtly drew on the theme of Support, expressed both functionally and figuratively. We incorporated practical staff-focused utilities throughout the space, while also reflecting the idea visually through elements such as raised platforms, mesh light fittings, and metal frame structures.





LOUNGE



RECEPTION DESK

PRIVATE CLIENT

In this project, we collaborated with a startup fund to help develop their brand and translate their newly defined brand values throughout the space. With a clean and refined palette, the focus was on the quality of finishes and creating a thoughtful, high-end user experience.

15K SQ. FT.

FITZROVIA

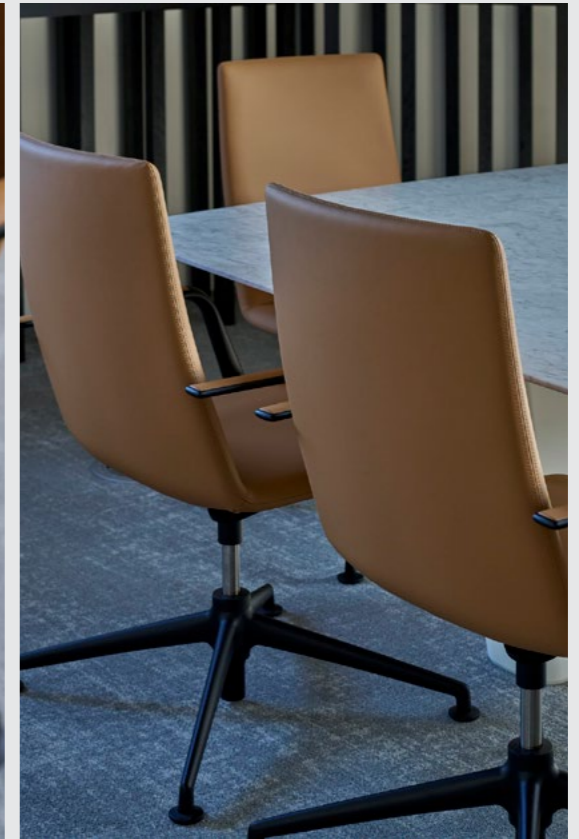
2023



RECEPTION



BREAKOUT SEATING





ST. JAMES PLACE . PADDINGTON

Since 2019, we've partnered with St. James's Place on a range of projects, including their 60,000 sq. ft. London headquarters in the City, a 15,000 sq. ft. office in Knightsbridge, and most recently, their executive offices in Paddington.

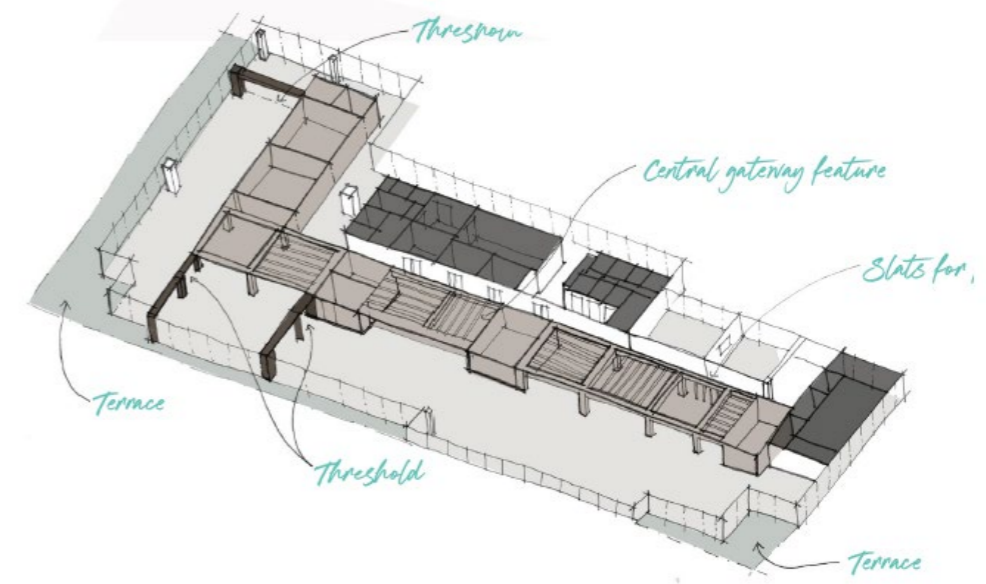
14K SQ. FT.

55 Paddington

2023



Gateway /
noun [C]
1/ a passage into or out of a place or condition
2/ a way of achieving something
3/ a place through which you have to go to get to a particular area



CONCEPT. Gateway

For SJP's new executive offices in Paddington, we collaborated with their marketing team to create a younger, fresher aesthetic. It was essential that the space serve as a gateway to the next era of the business—a concept inspired both by the office's proximity to Paddington Station and the architecture of the building itself.



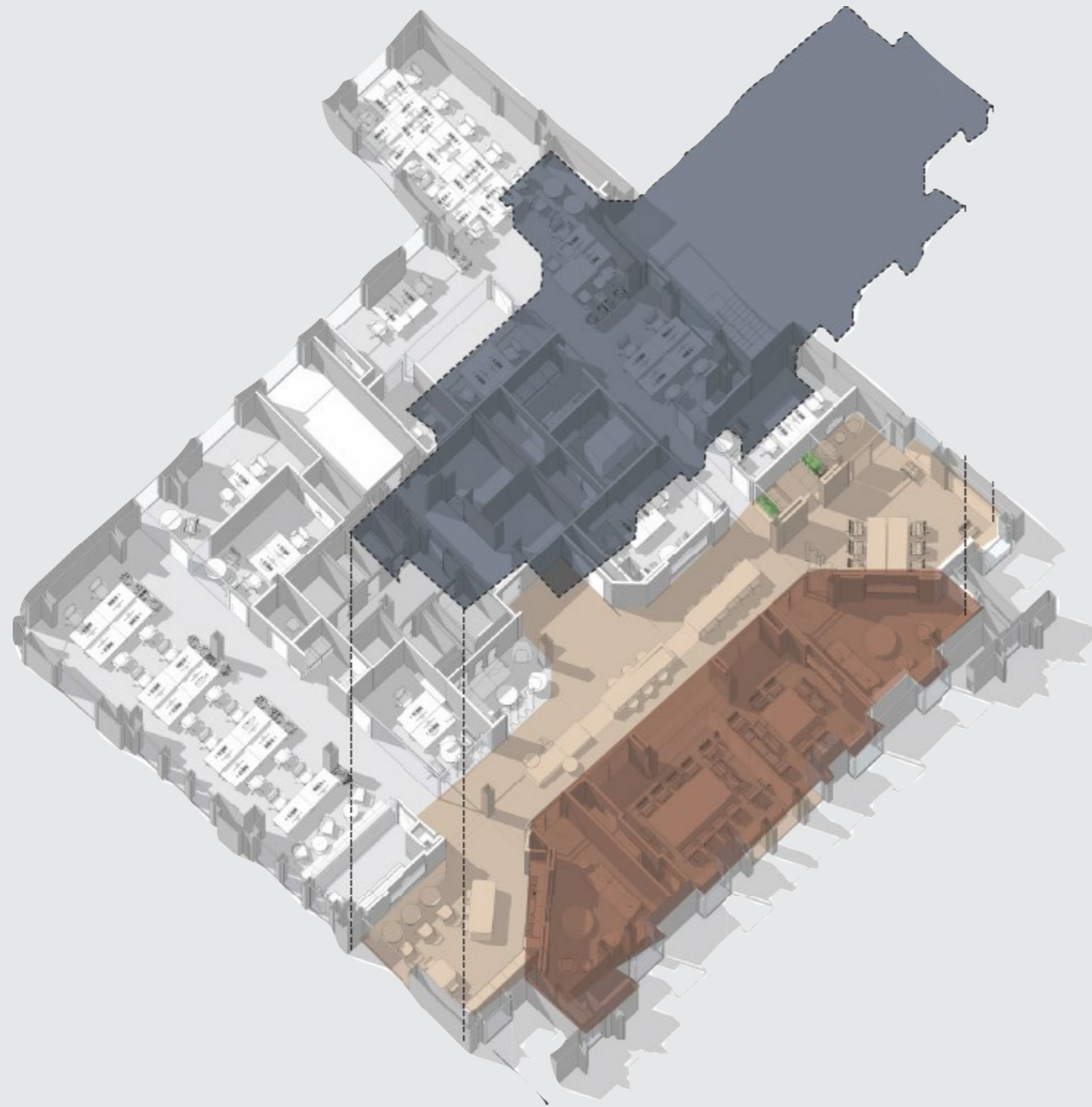
RECEPTION



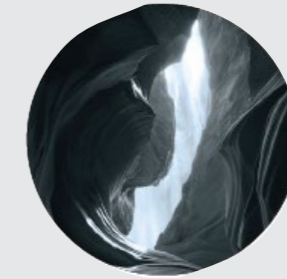


SECTOR

RETAIL & HOSPITALITY



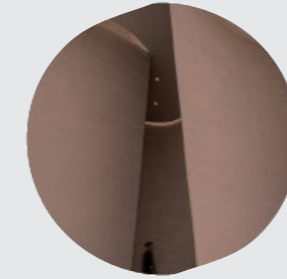
LIGHT REVEAL



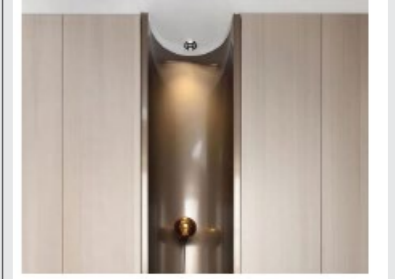
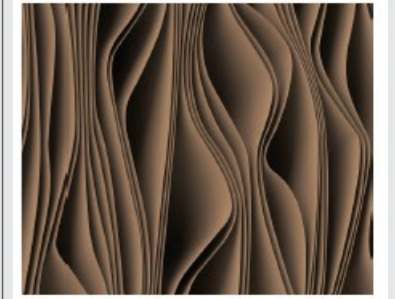
UNEARTH CORE



LAND MEETS SEA



EARTH



FOUR SEASONS

We had the privilege of working on the Four Seasons offices alongside their in-house workplace team in Toronto and their hotel hospitality team in Madrid to fully understand the brand direction and global employee requirements.

6K.SQ.FT.

Eagle House, Jermyn Street

CONCEPT.Unearth

Four Seasons' in-house hospitality team emphasized the importance of texture and sensory experience across their hotels. Inspired by this, we developed the concept of Uneathing—aiming to create a design that feels like a smooth surface revealing natural textures beneath, adding depth and interest. This concept was brought to life through the use of solid surfaces, textured paints, and carefully selected fabrics throughout the space



RECEPTION JOINERY



LIFT LOBBY



FURNITURE DETAIL







SECTOR

TECH



CONFIDENTIAL CLIENT

A forward-thinking tech company moves into one of London's most iconic landmarks, 22 Bishopsgate. The design challenges the typical tech aesthetic, shifting toward a more residential feel with layered interiors and high-quality finishes. Bespoke joinery, tailored for both client and visitors, introduces moments of refinement and quiet sophistication throughout the space.

17K SQ.FT.

 22 BISHOPSGATE

 2024



OPEN PLAN



OPEN PLAN



BREAKOUT SPACE



CONFIDENTIAL CLIENT

The client sought to revitalise a dated workspace lacking energy. Our approach re-imagined the spatial journey, creating a more intentional, engaging user experience. We redefined the meeting room strategy, optimising typologies and flexibility, while introducing destination zones tailored to diverse user needs. The result is an experience-driven environment supporting varied work-styles and enhancing spatial identity.

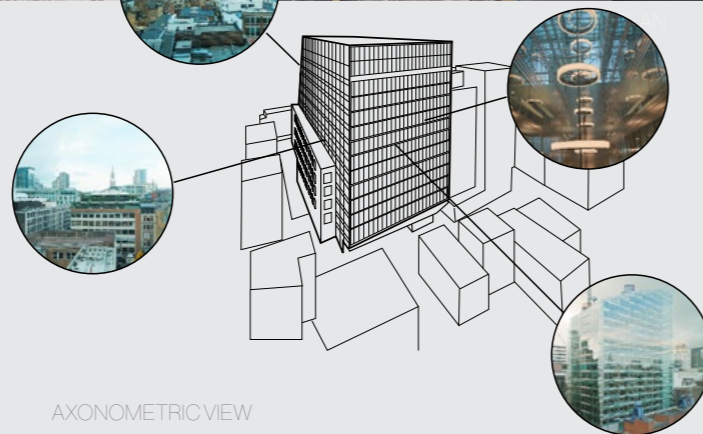
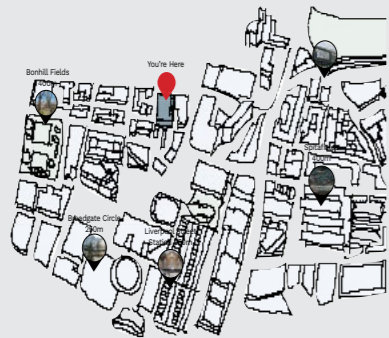
55K SQ. FT.

LIVERPOOL STREET

2025



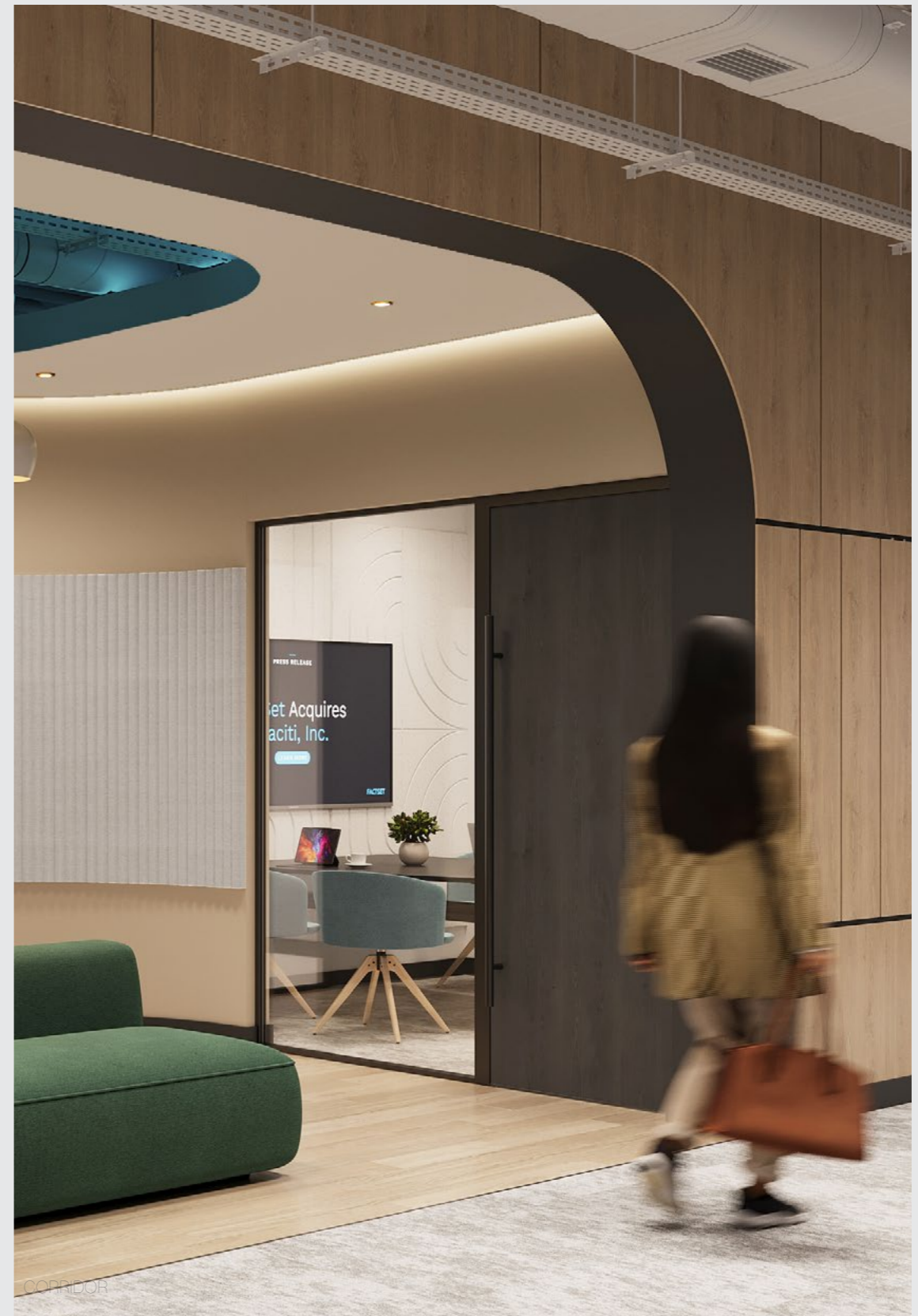
PLAN VIEW



AXONOMETRIC VIEW

BUILDING STUDY

The building study prioritises well-lit, comfortable environments to support employee wellbeing and productivity. Spaces are strategically positioned for optimal function, while access to outside views strengthens connection to surroundings. This approach helps create a calming atmosphere that enhances creativity, engagement, and overall workplace experience, while also contributing to reduced stress levels.





CONFIDENTIAL CLIENT

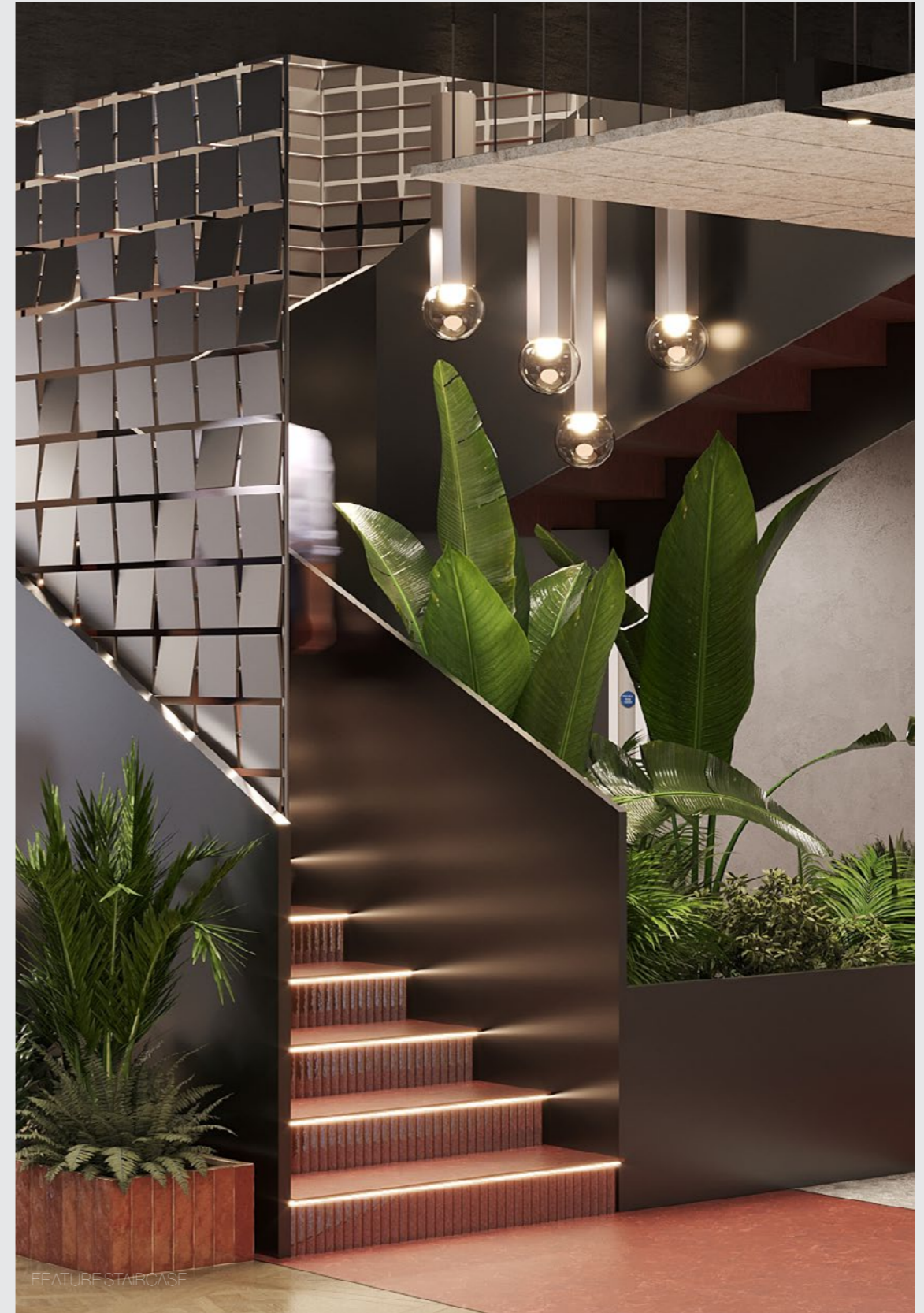




COLLABORATION SPACE



OPEN PLAN



FEATURE STAIRCASE



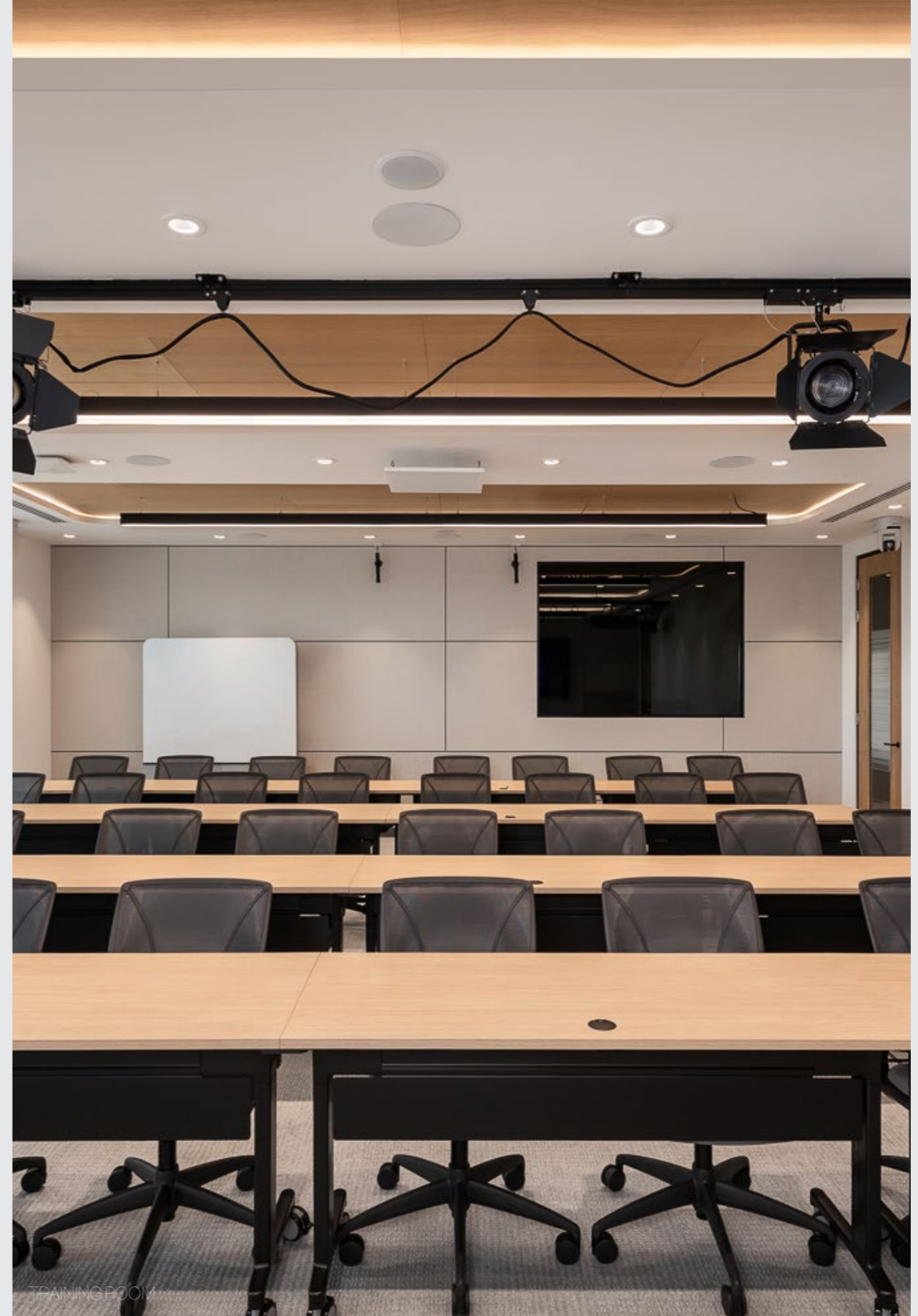
RECEPTION



ARRIVAL



BOARDROOM





SECTOR

MISCELLANEOUS



FEATURE STAIRCASE





COLLABORATION



LIBRARY



OPEN PLAN



FEATURE STAIRCASE

CONFIDENTIAL CLIENT

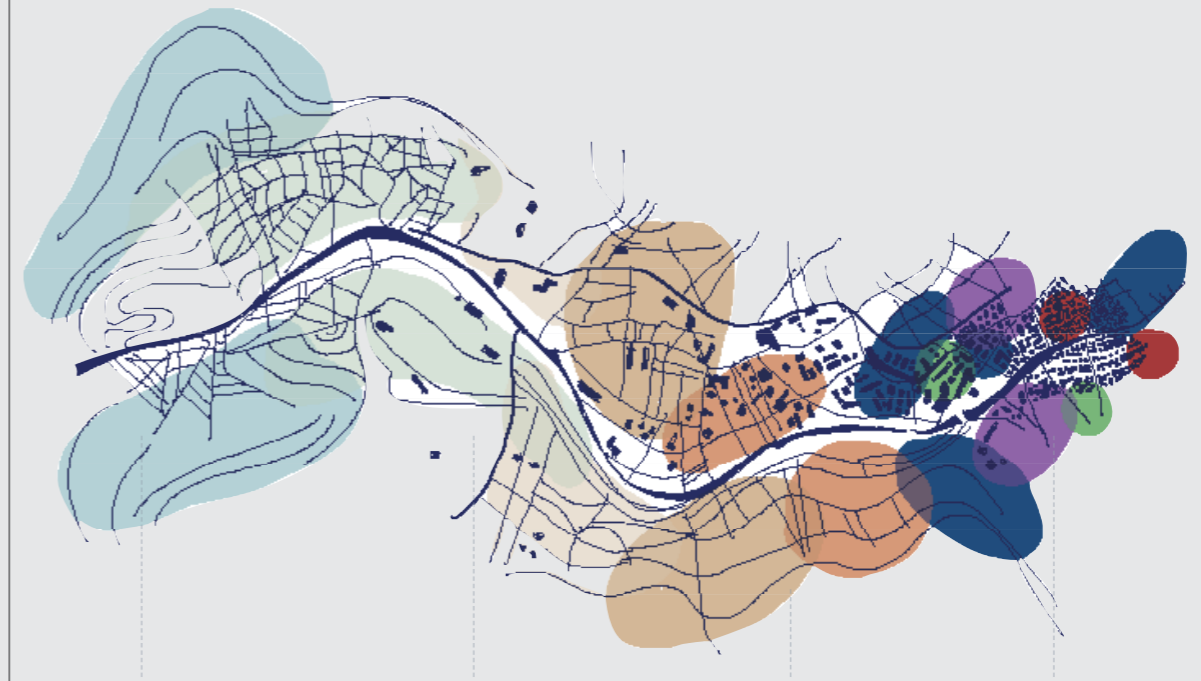
This proposal for a leading European frozen food company was based on planning a move to Woking to consolidate its teams into one space. The relocation aimed to bring people together while reviewing and improving existing workplace dynamics.

35K. SQ. FT.

Woking

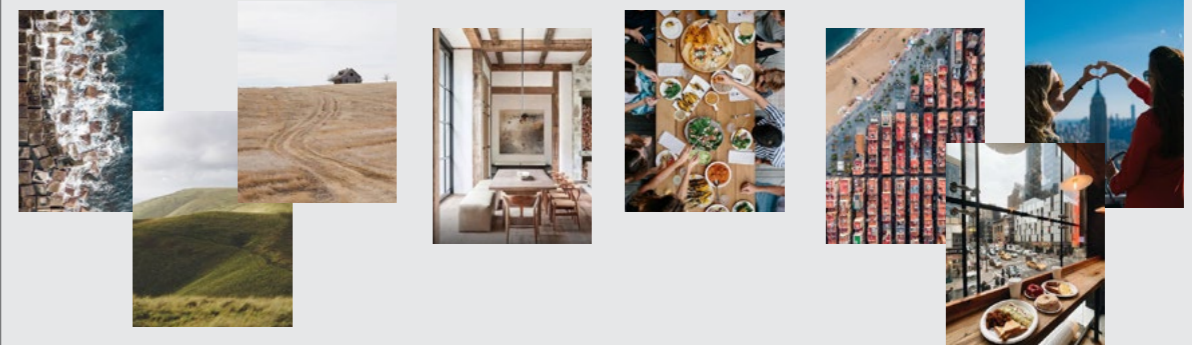
© 2023 [Company Name]. All rights reserved.

Woking, Surrey, UK



FROM THE FIELDS...

...TO THE FORKS



CONCEPT: "From the fields to the fork"

This interior design concept for this consumer goods company translates their core mission: bringing food from natural origins to shared tables, into a spatial journey. The space becomes more than an office or facility; it becomes an experiential narrative that mirrors the lifecycle of food, from cultivation to consumption, while reflecting both collective and individual human experiences.





FEATURE STAIRCASE

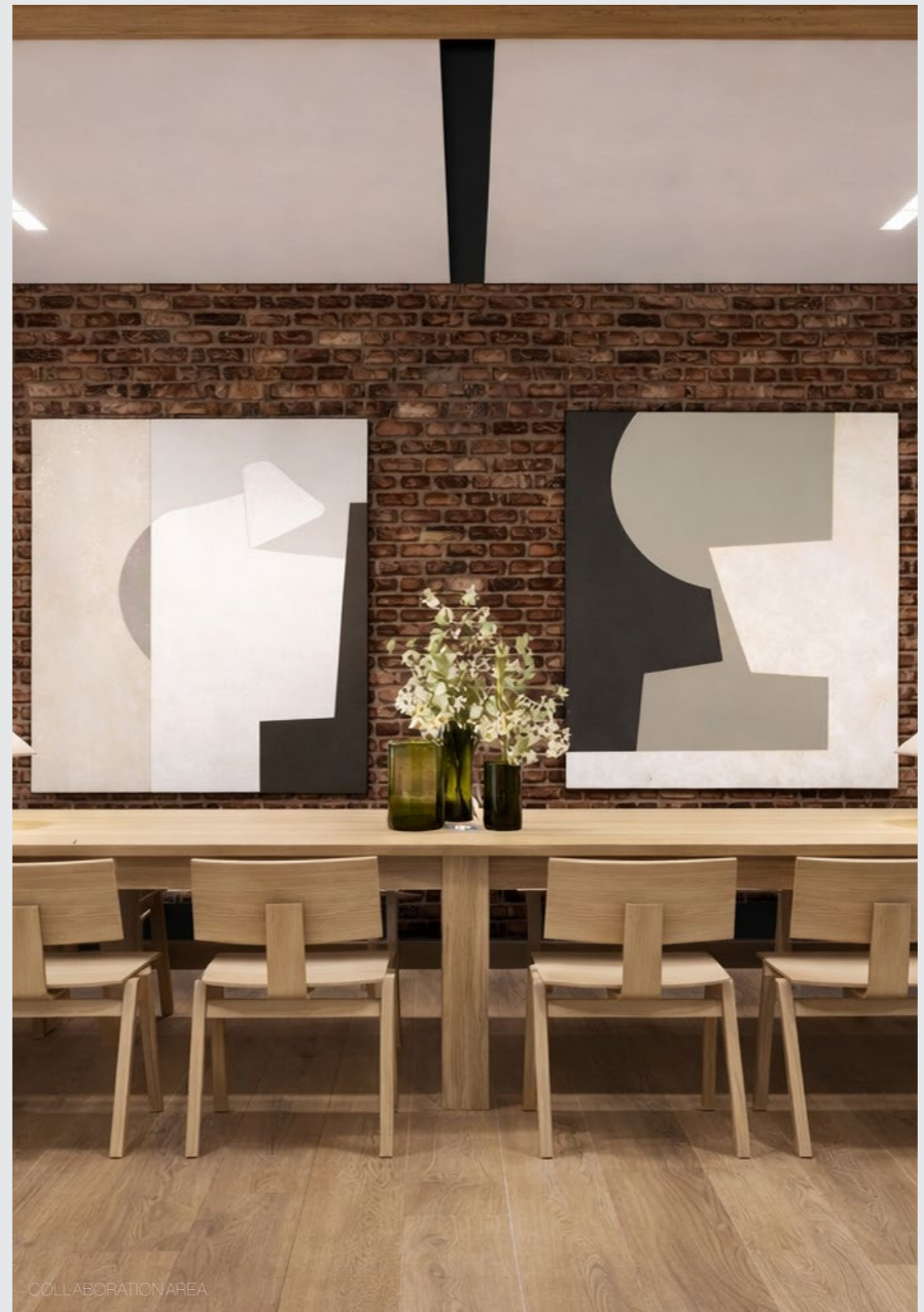
SECTOR

CO-WORKING



CONFIDENTIAL CLIENT









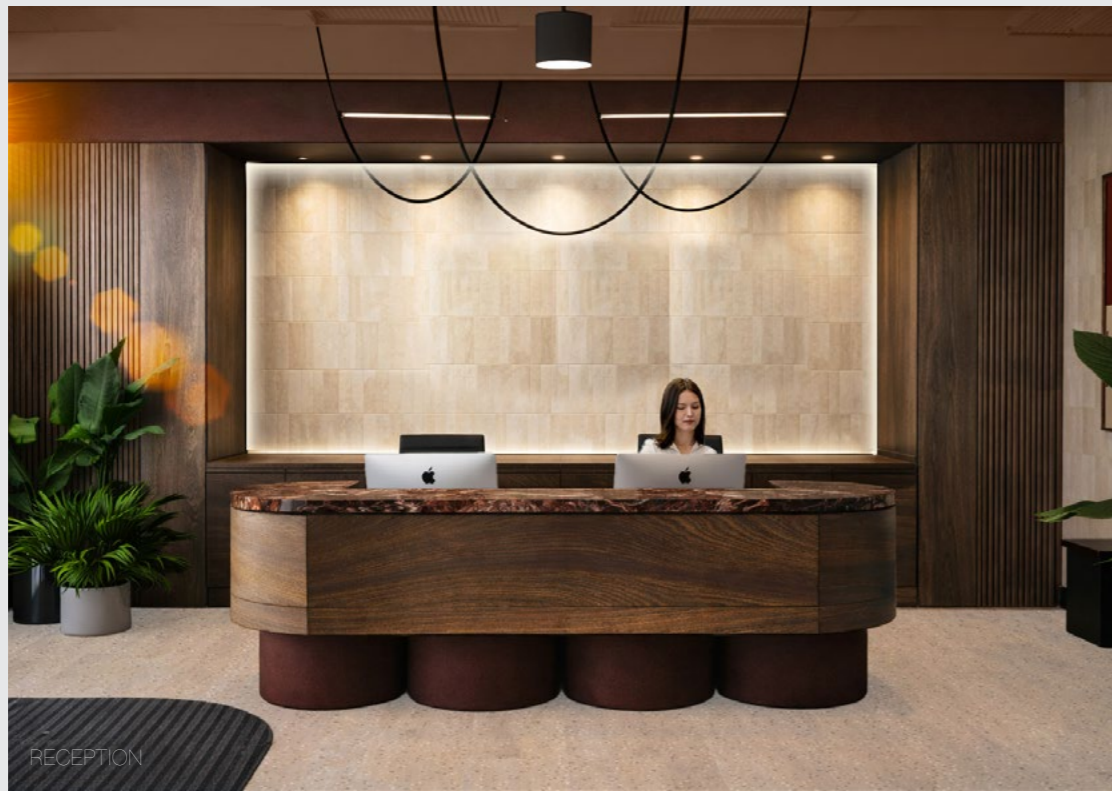
MEETING ROOM



PRIVATE OFFICE



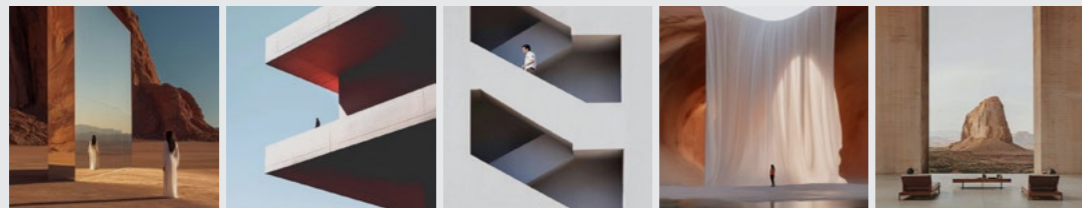
CAFE BAR



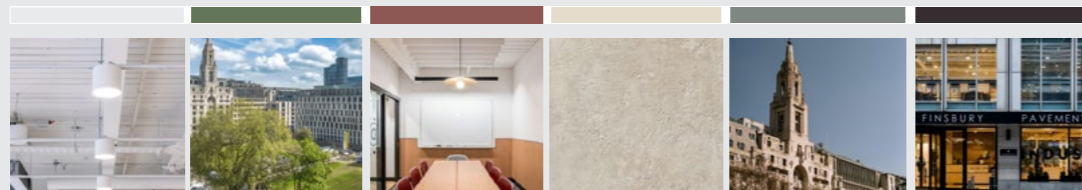
RECEPTION

CONFIDENTIAL CLIENT

Finsbury Pavement is more than a street; it's a historic threshold linking Moorgate to City Road. Once marshland (Moorfields), it evolved into a dense commercial corridor, defined by continual transition: nature to infrastructure to finance. This idea shapes the interior design, where layered spatial thresholds guide movement from bright, focused work areas to more relaxed, hospitality-led spaces like lounges, breakout zones, and meeting rooms.



The colour palette presented below is derived from the building, its existing interior features, and the external surroundings.



CONFIDENTIAL CLIENT



COMMUNAL AREA



CAFE AREA - LEVEL 01



COMMUNAL AREA - LEVEL 01



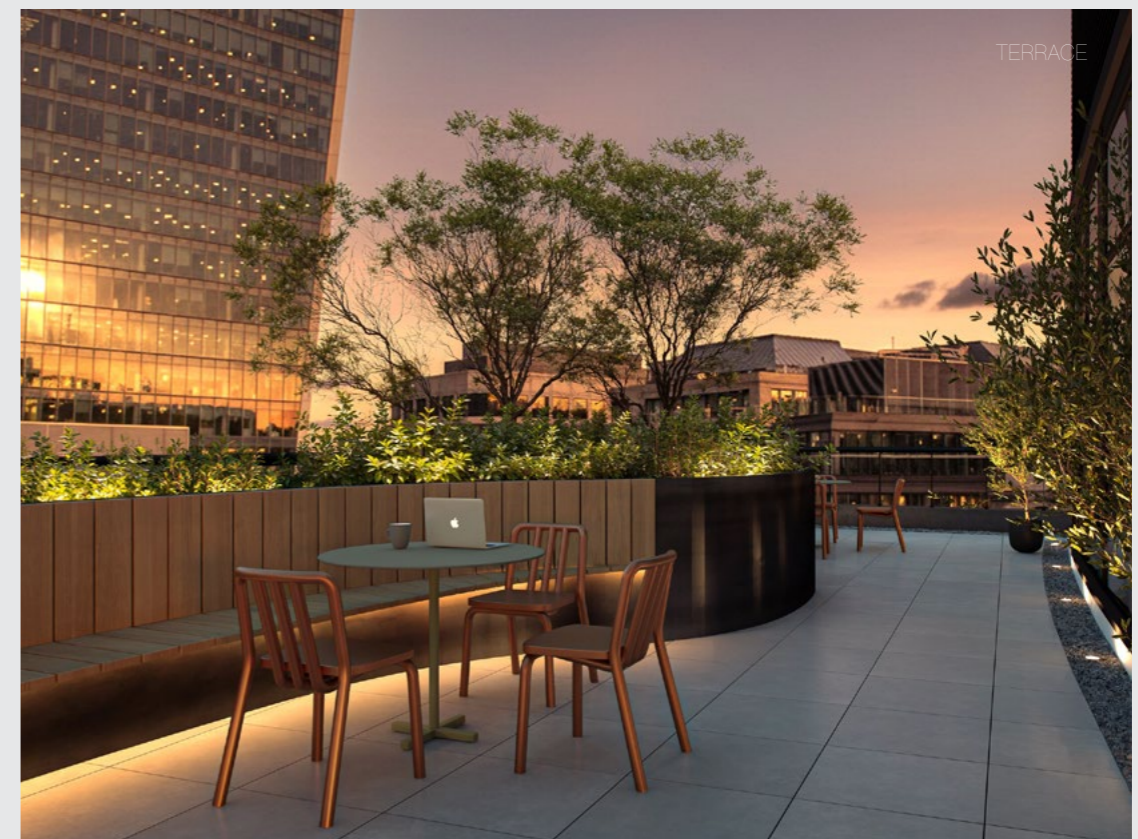
COLLABORATION AREA



SECTOR

LANDLORD WORKS

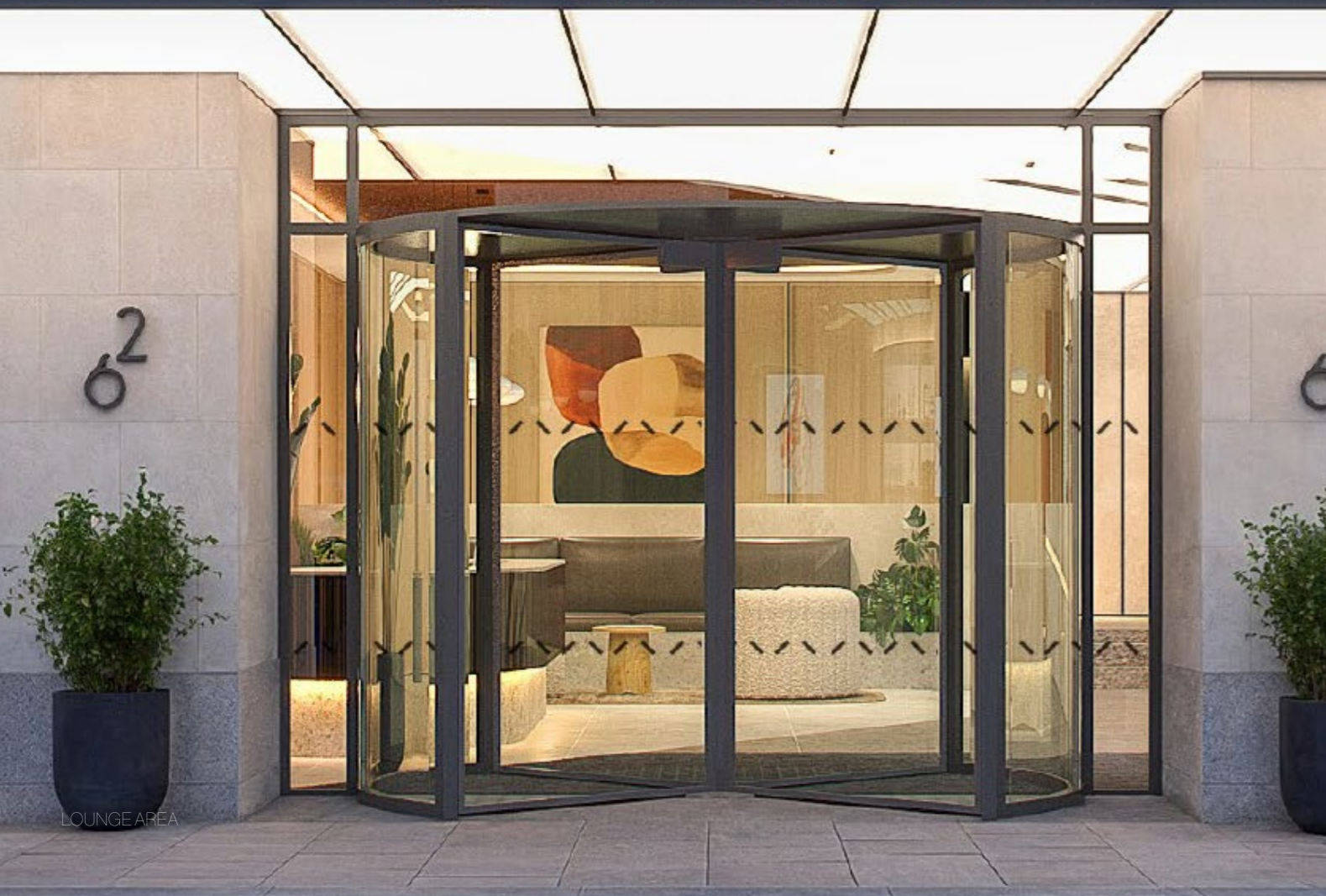




94
REX BUILDING



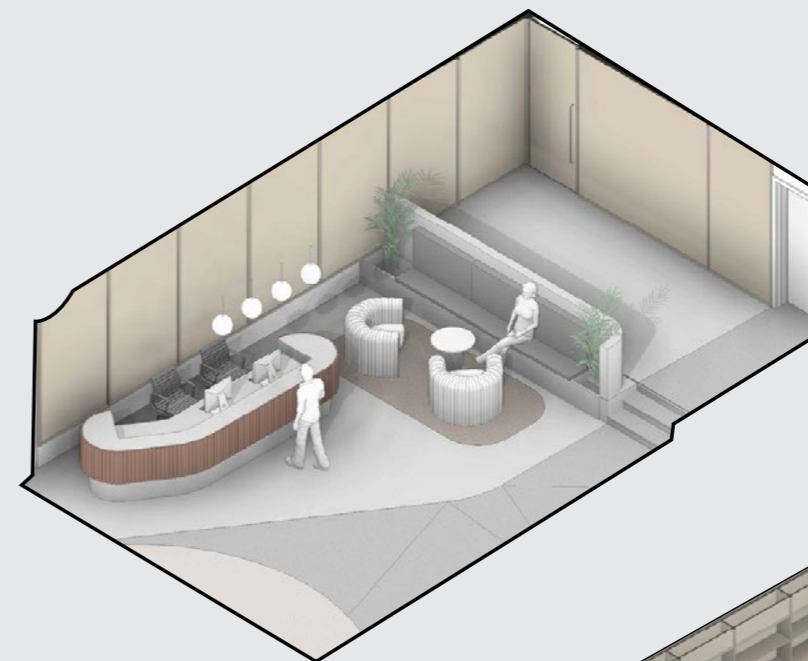
THE REX BUILDING



LOUNGE AREA



RECEPTION AREA



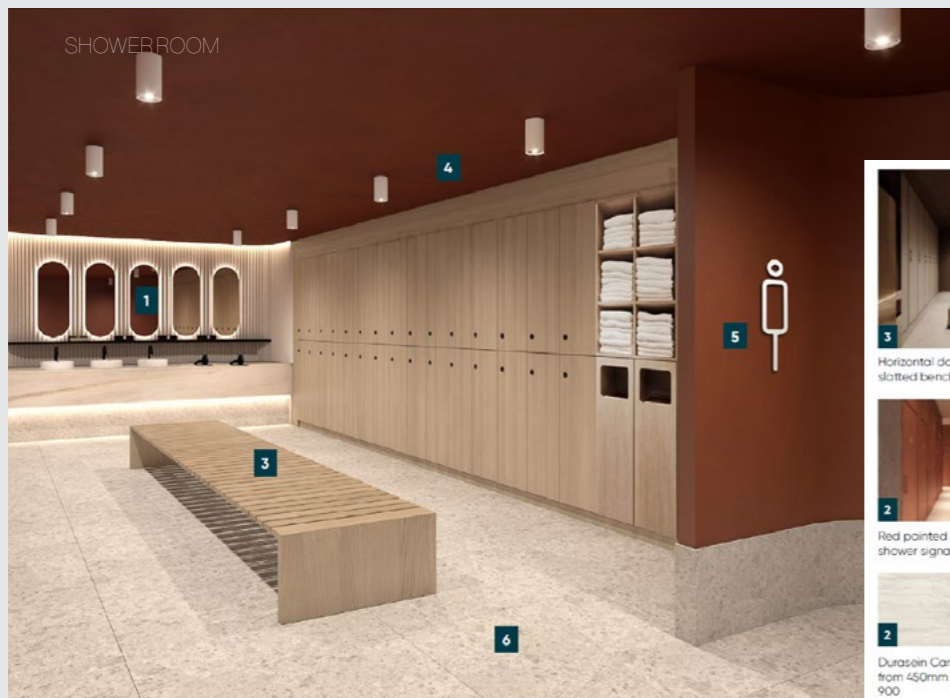
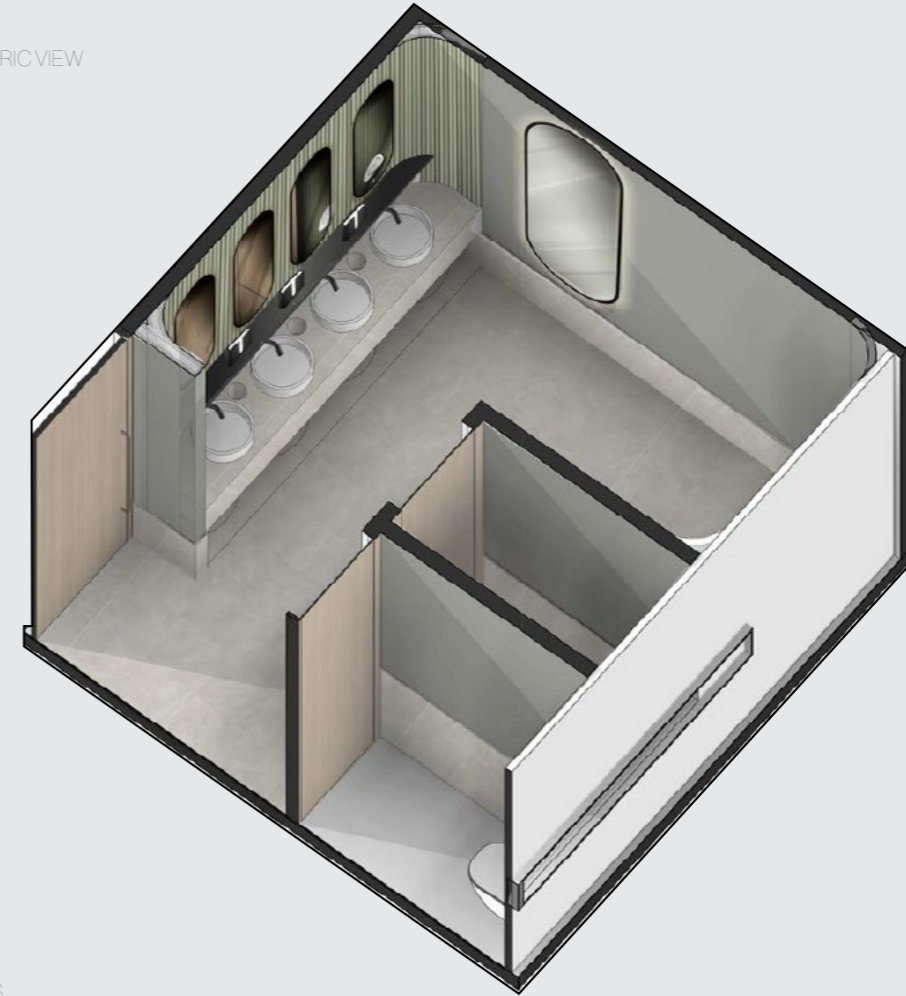
RECEPTION AREA
AXONOMETRIC VIEWS



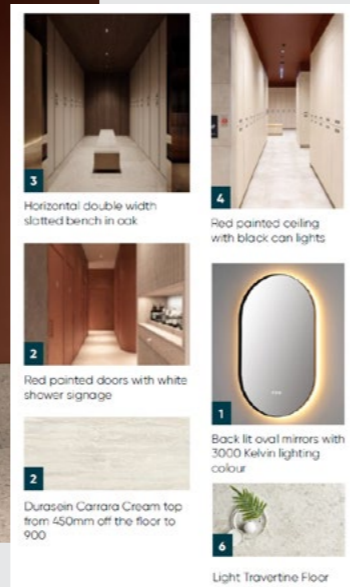


CAFE AREA

TOILETS
AXONOMETRIC VIEW



SHOWERROOM



- 3 Horizontal double width slatted bench in oak
- 4 Red painted ceiling with black can lights
- 2 Red painted doors with white shower signage
- 1 Back lit oval mirrors with 3000 Kelvin lighting colour
- 2 Durasoin Carrara Cream top from 450mm off the floor to 900
- 6 Light Travertine Floor

TOILETS
ELEVATIONS





WAY FINDING STUDY

4	Reception User Experience Lab			
3	Tech Bar Wellness Centre			
2	Cafe Team Games			
1	Training Rooms Multi Faith Room			



EXTERNAL VIEW



BOOKABLE MEETING ROOM

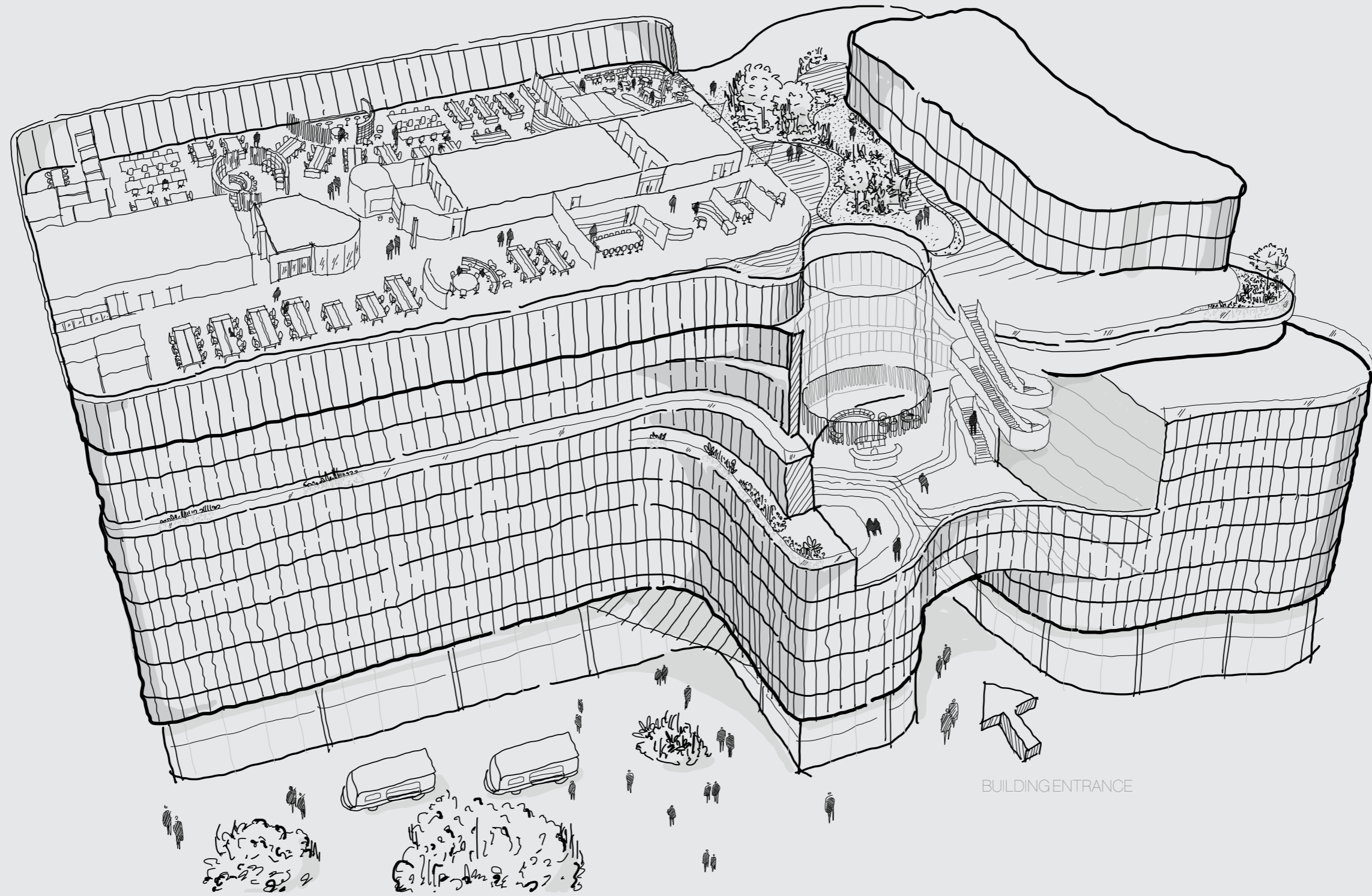


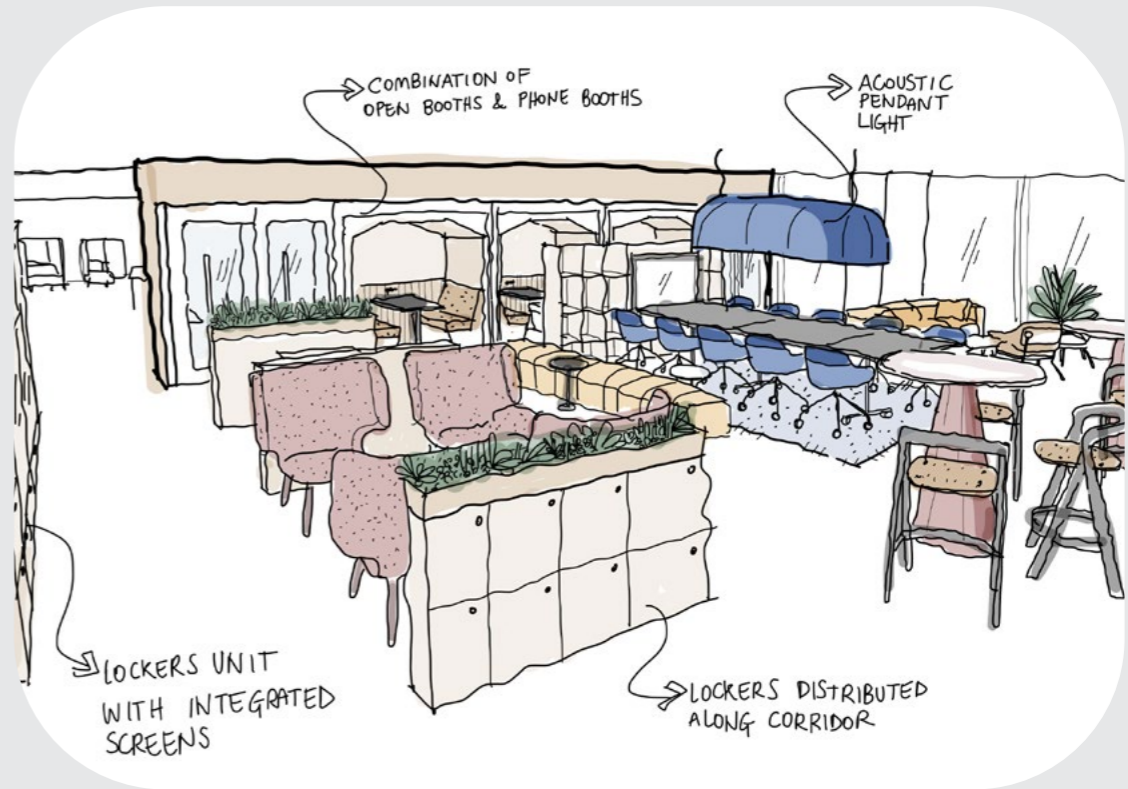
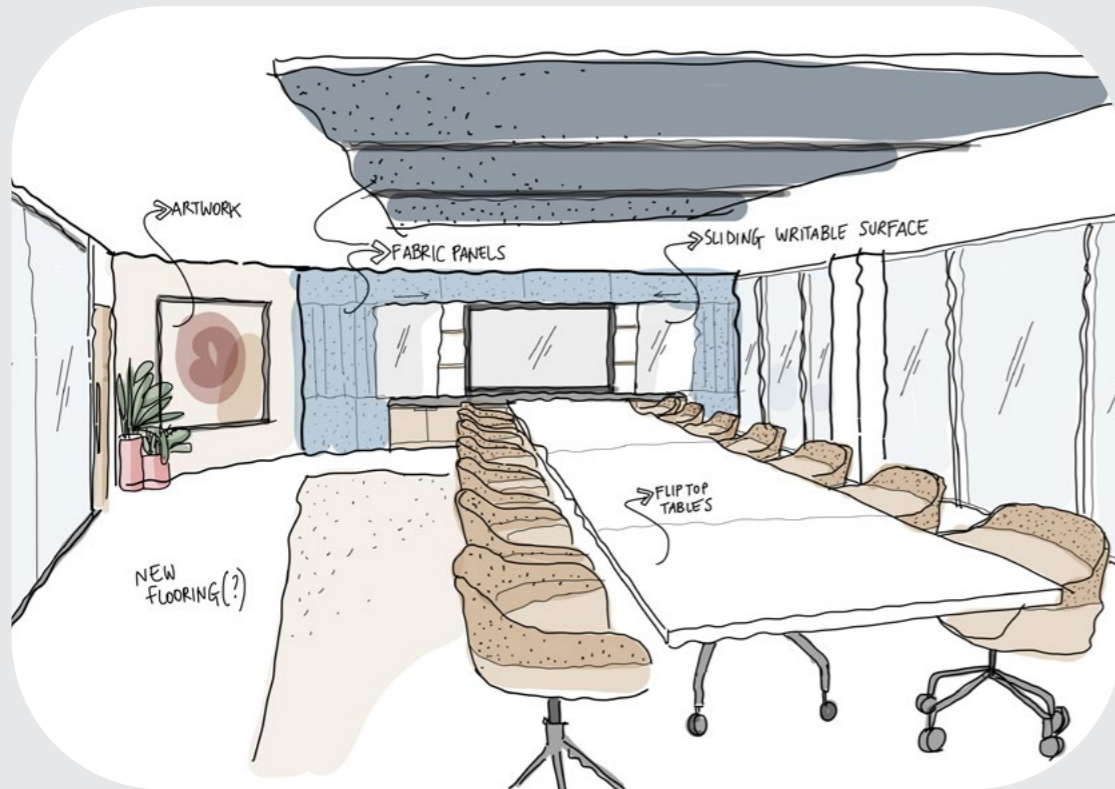
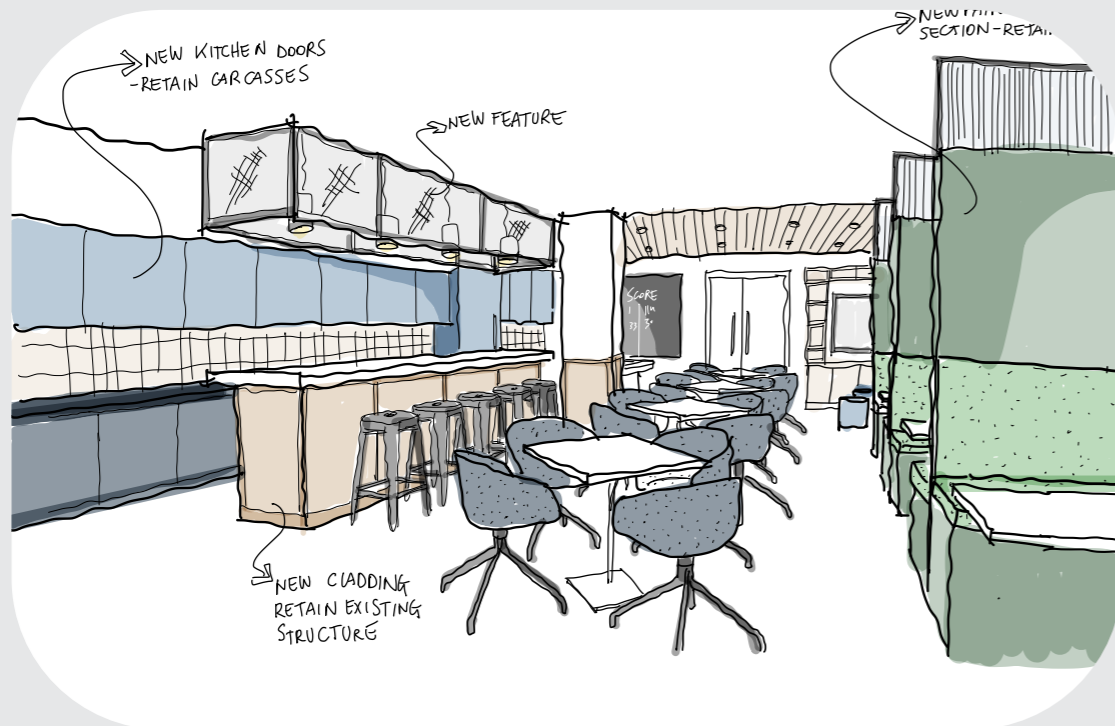
TERRACE VIEW

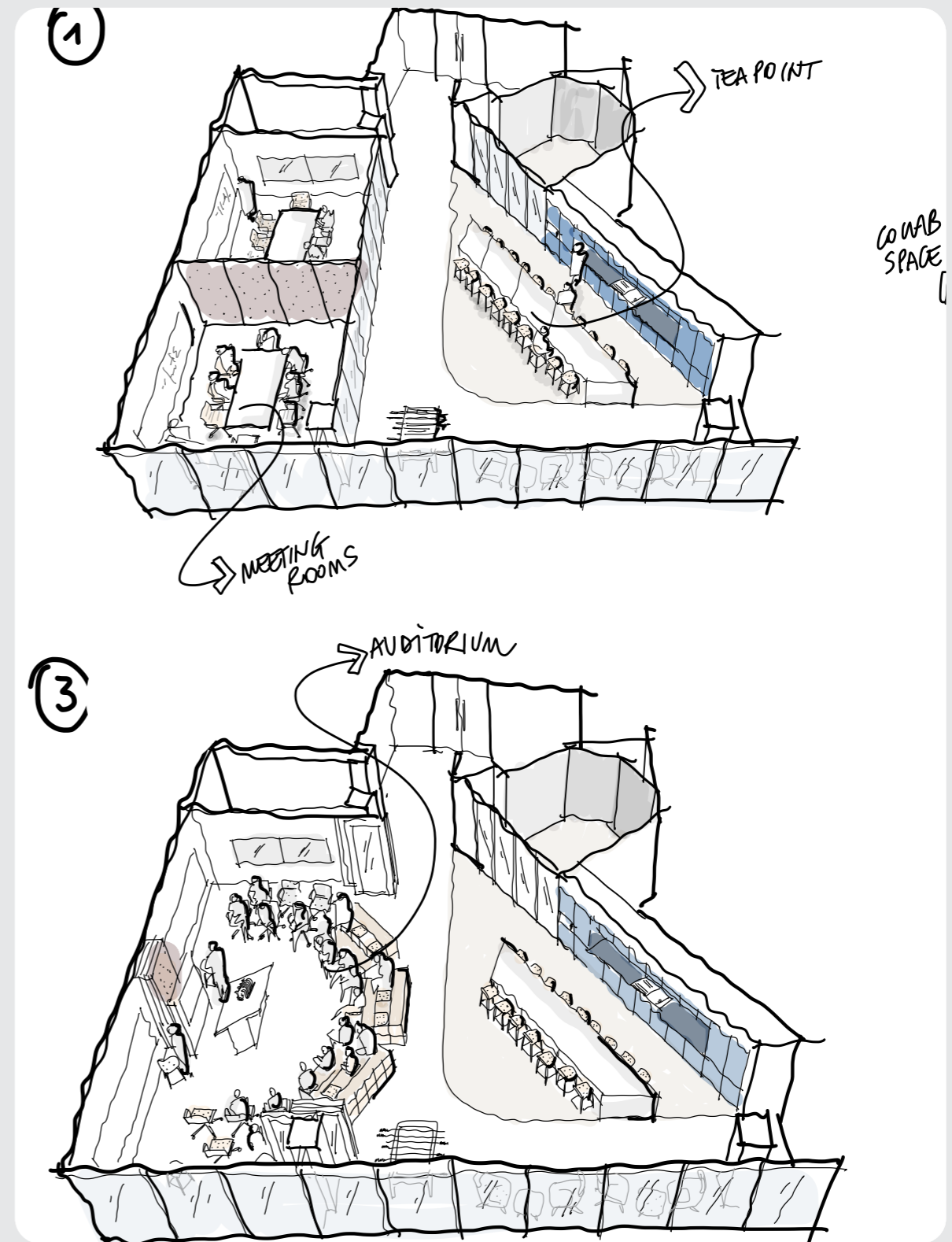
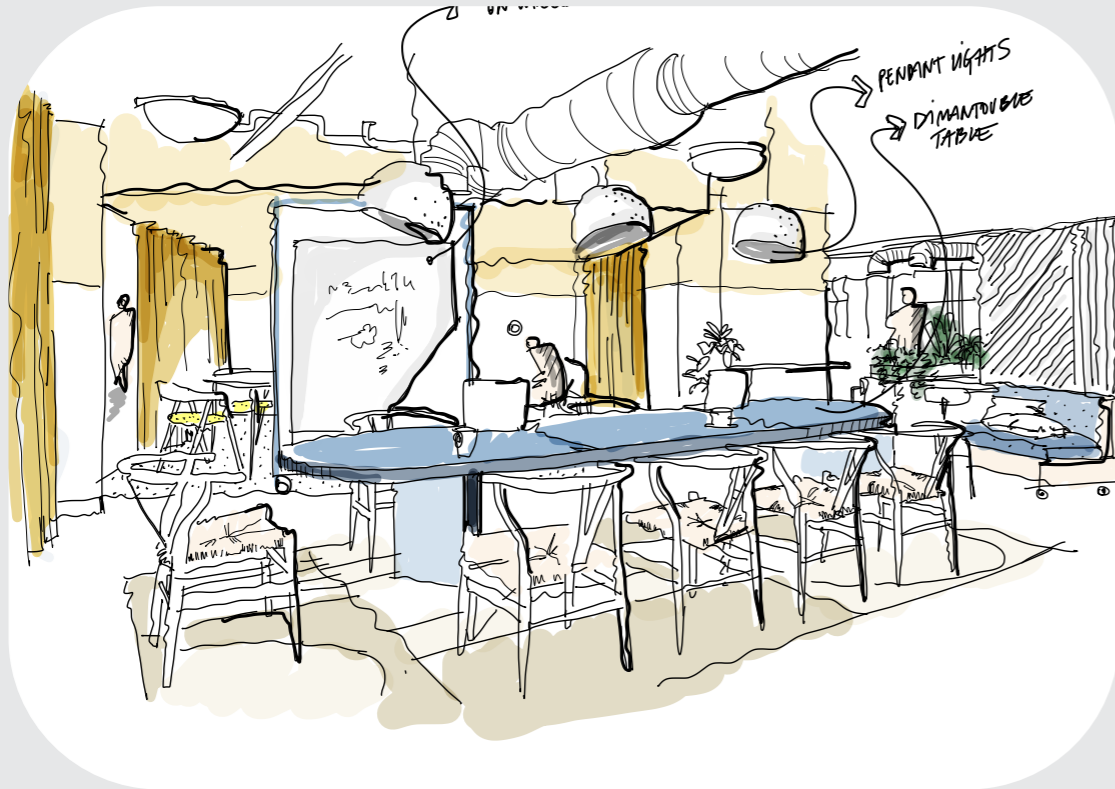
CONCEPT SKETCHING

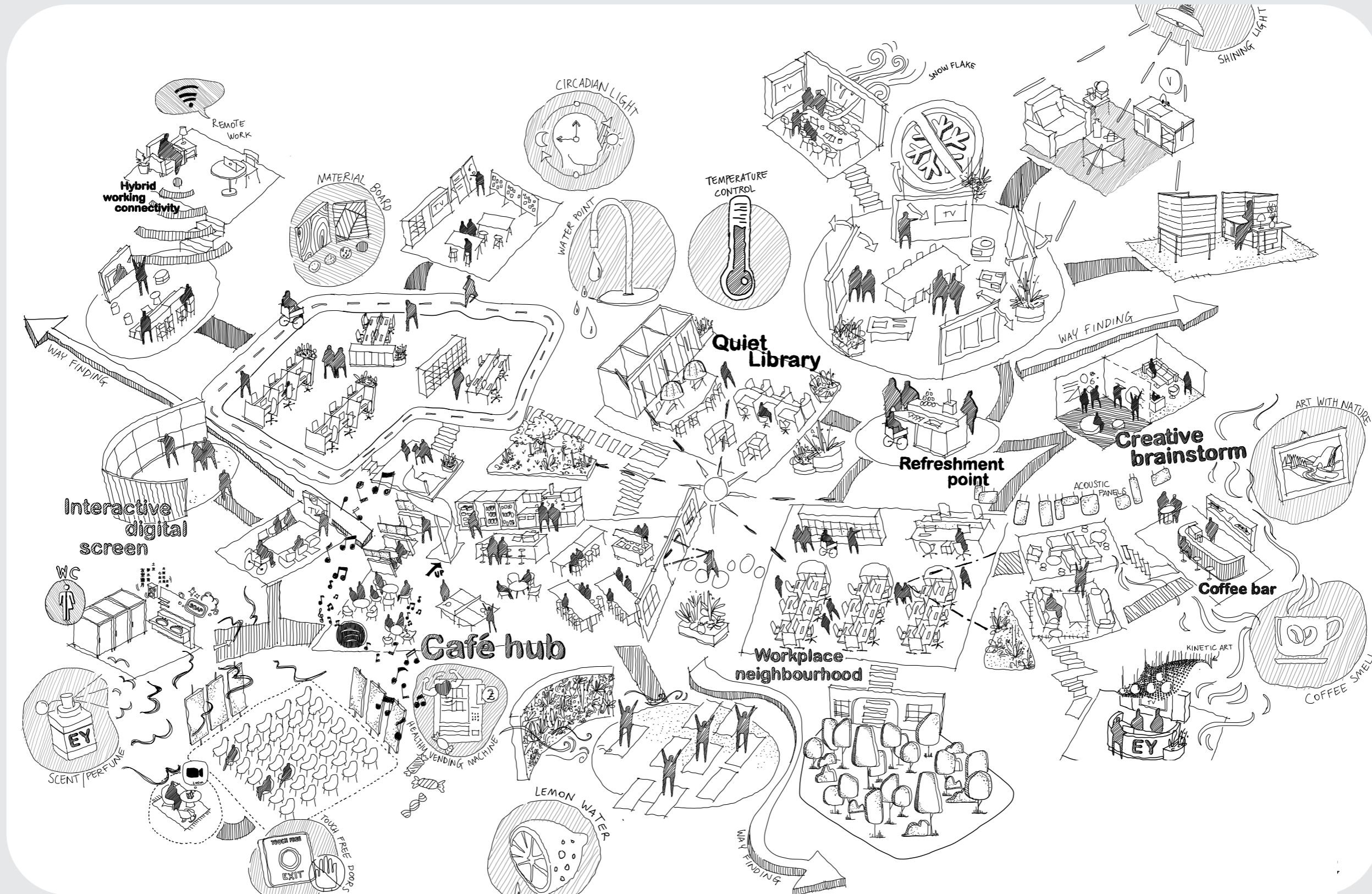
The sketches that follow have been developed to support client meetings, helping communicate ideas clearly in the early, conceptual stages of a project. They create a shared visual language, making conversations more intuitive. Beyond this, they've also supported workplace strategists across the industry contributing to studies, documents, and broader design thinking processes.

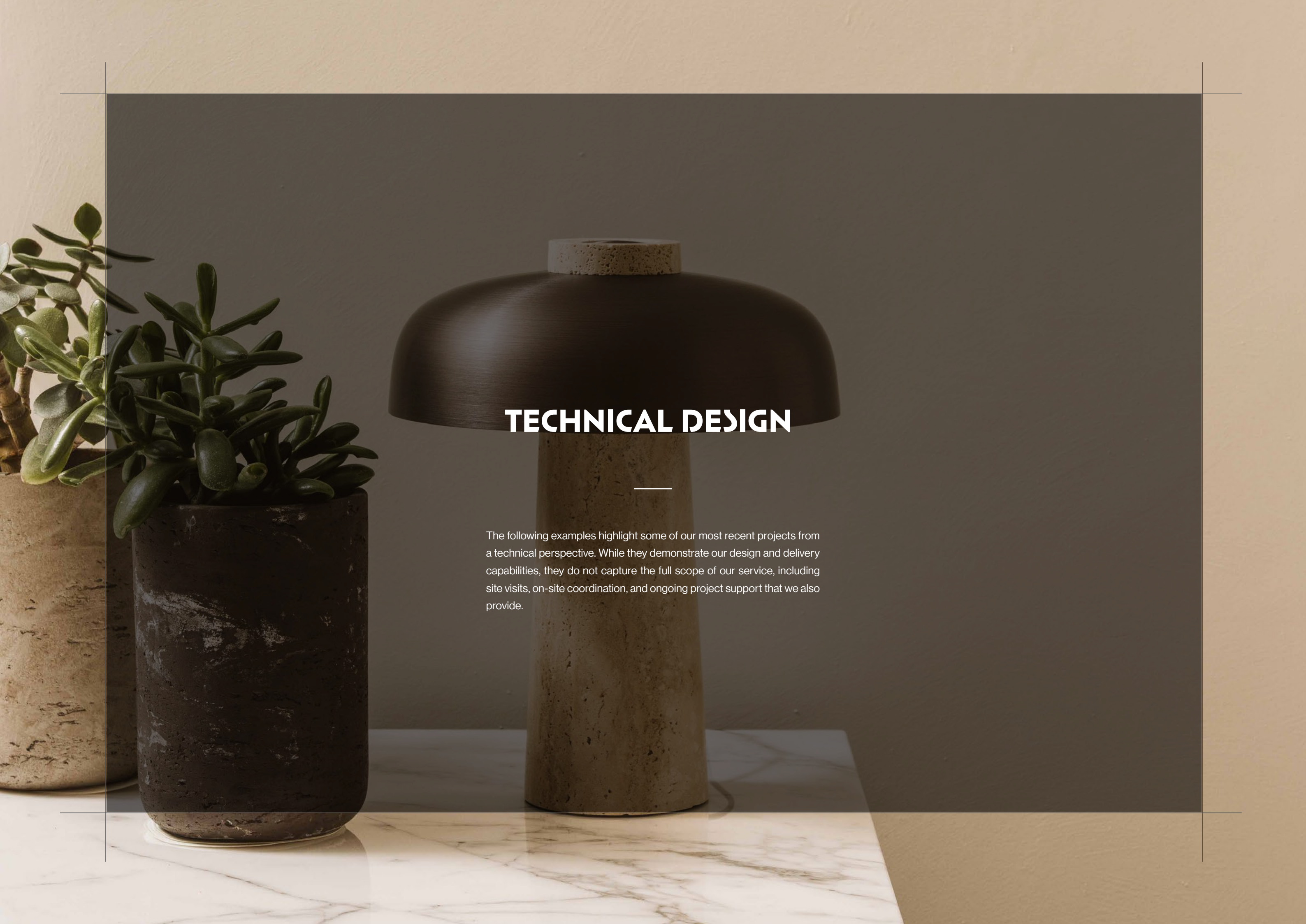








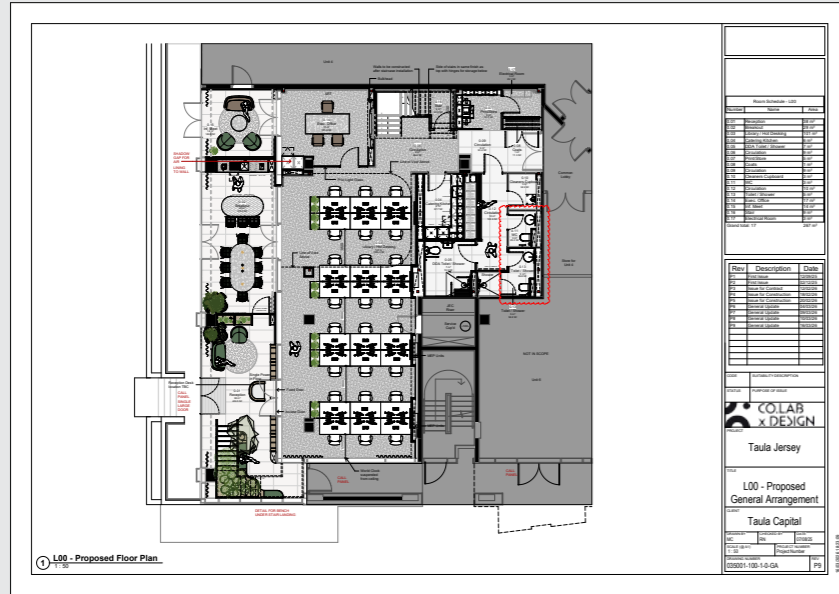




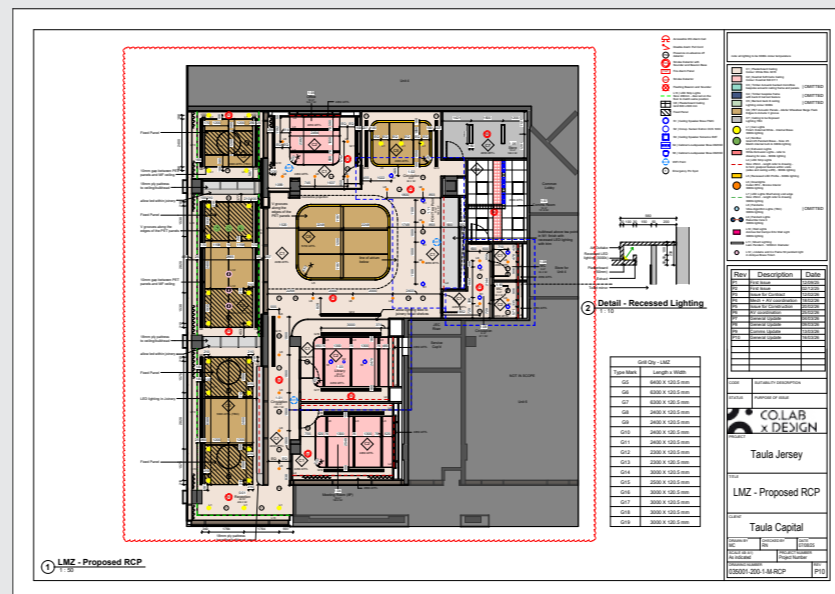
TECHNICAL DESIGN

The following examples highlight some of our most recent projects from a technical perspective. While they demonstrate our design and delivery capabilities, they do not capture the full scope of our service, including site visits, on-site coordination, and ongoing project support that we also provide.

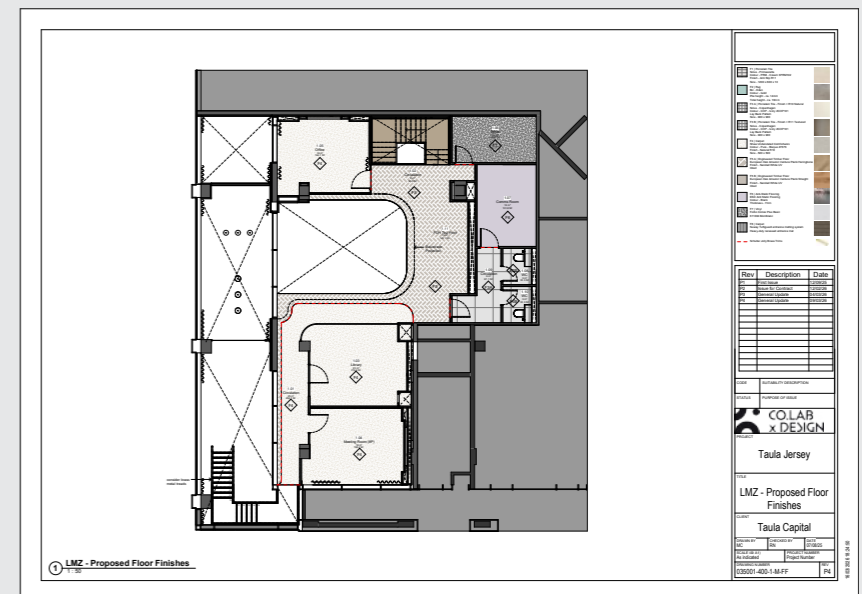
GENERAL ARRANGEMENT PLAN



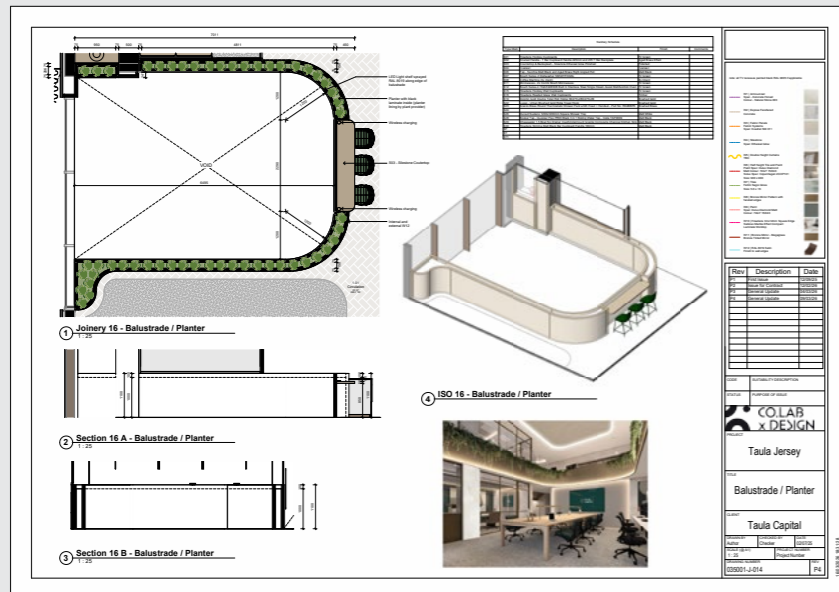
REFLECTED CEILING PLAN



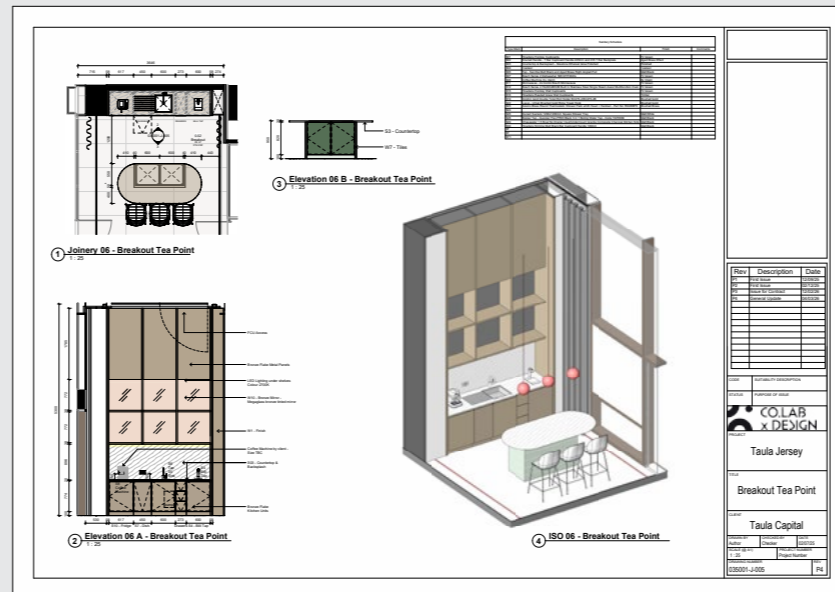
FLOOR FINISHES PLAN



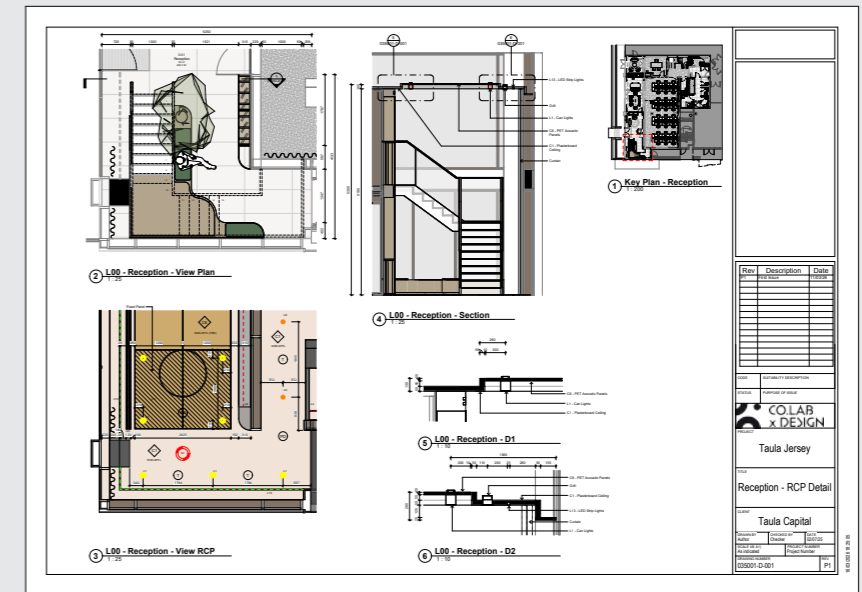
BALUSTRADE DETAILS



JOINERY DETAIL DRAWINGS



CEILING DETAILS



STAIRCASE DETAIL DRAWING

Architectural drawings of staircase details. The drawings include:

- Detail - L1B - Bolt Staircase
- Detail - L1MC - Bolt Staircase
- ISO 01 - Bolt Staircase
- ISO 02 - Bolt Staircase
- Elevation - Bolt Staircase
- Section - Bolt Staircase
- Indicative Bolt Stair Section

 A revision table and a title block are also present. The title block includes the COLAB x DESIGN logo, the name Taula Jersey, and the project name BLDG - Building Stack.

CEILING DETAIL

Architectural drawings of ceiling details. The drawings include:

- WCs - View Plan
- L00 - WCs - View RCP

 A revision table and a title block are also present. The title block includes the COLAB x DESIGN logo, the name Taula Jersey, and the project name L00 - WCs Ceiling Detail.

DDA TOILET & SHOWER

Architectural drawings of DDA Toilet & Shower. The drawings include:

- DDA Toilet / Shower - View Plan
- L00 - DDA Toilet / Shower - View RCP
- DDA Toilet / Shower - Elevation 1
- DDA Toilet / Shower - Section 1
- ISO 01 - DDA Toilet / Shower

 A revision table and a title block are also present. The title block includes the COLAB x DESIGN logo, the name Taula Jersey, and the project name DDA Toilet / Shower.

BUILDING STACK

3D architectural rendering of the building stack. The rendering shows:

- Mezzanine
- Ground Floor

 A revision table and a title block are also present. The title block includes the COLAB x DESIGN logo, the name Taula Jersey, and the project name BLDG - Building Stack.

TRIGONOMETRIC VIEW

3D architectural rendering of the building stack showing a trigonometric view. A revision table and a title block are also present. The title block includes the COLAB x DESIGN logo, the name Taula Jersey, and the project name LMZ - Isometric A.

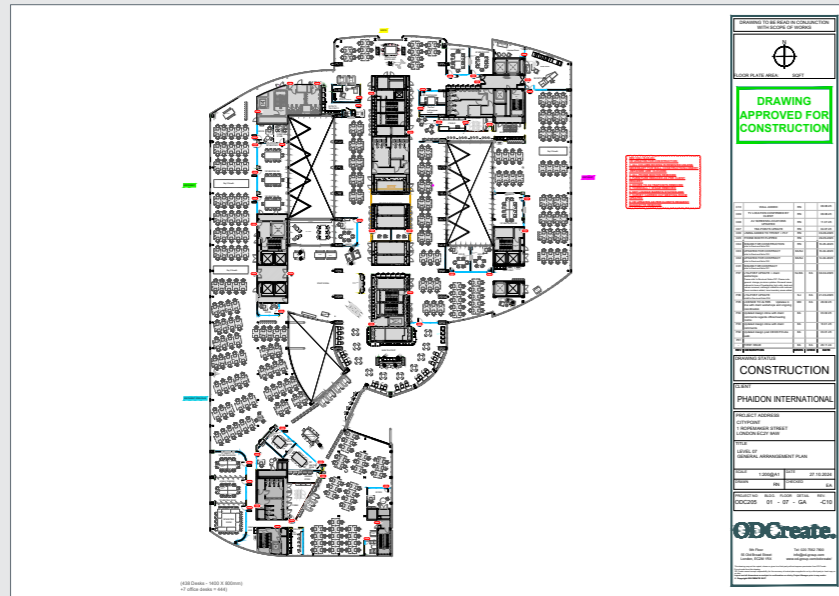
CEILING DETAILS

Architectural drawings of ceiling details for reception. The drawings include:

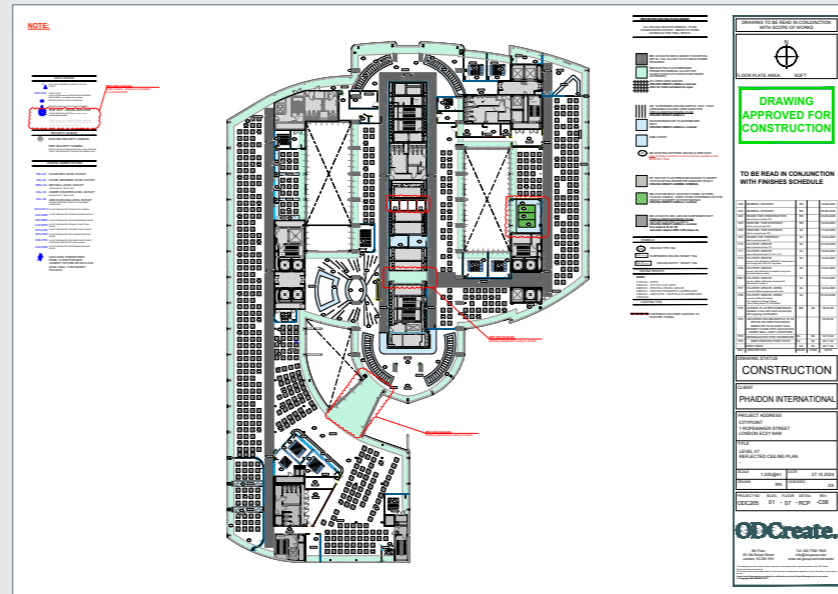
- L00 - Reception - View Plan
- L00 - Reception - Section
- Key Plan - Reception
- L00 - Reception - D1
- L00 - Reception - D2
- L00 - Reception - View RCP

 A revision table and a title block are also present. The title block includes the COLAB x DESIGN logo, the name Taula Jersey, and the project name Reception - RCP Detail.

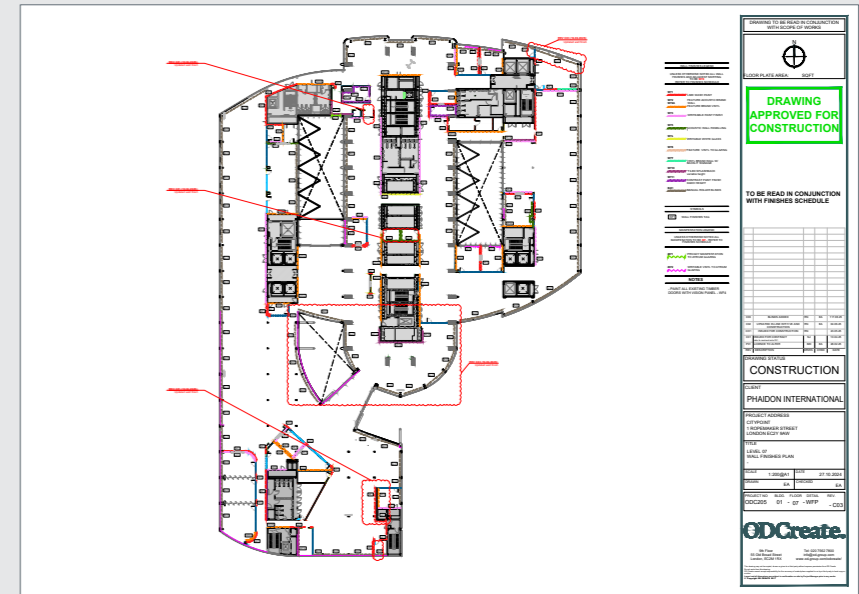
GENERAL ARRANGEMENT PLAN



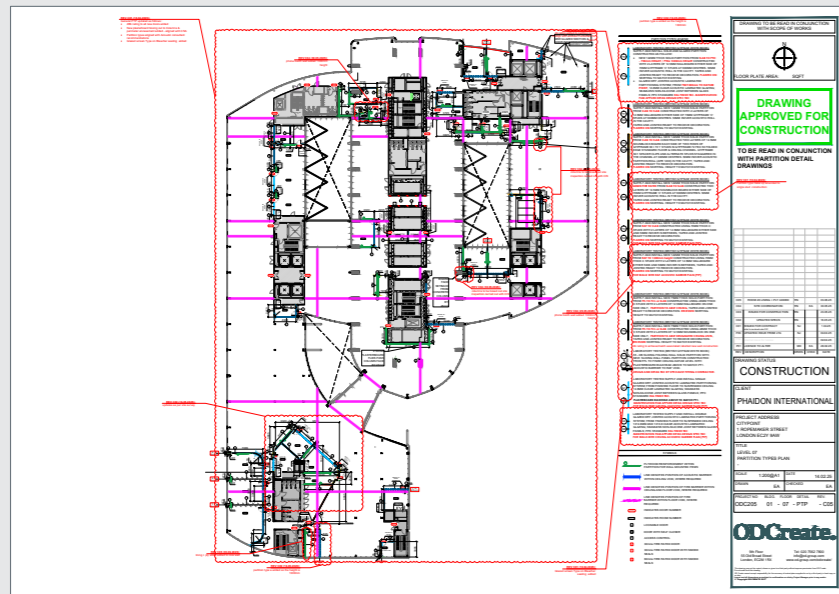
REFLECTED CEILING PLAN



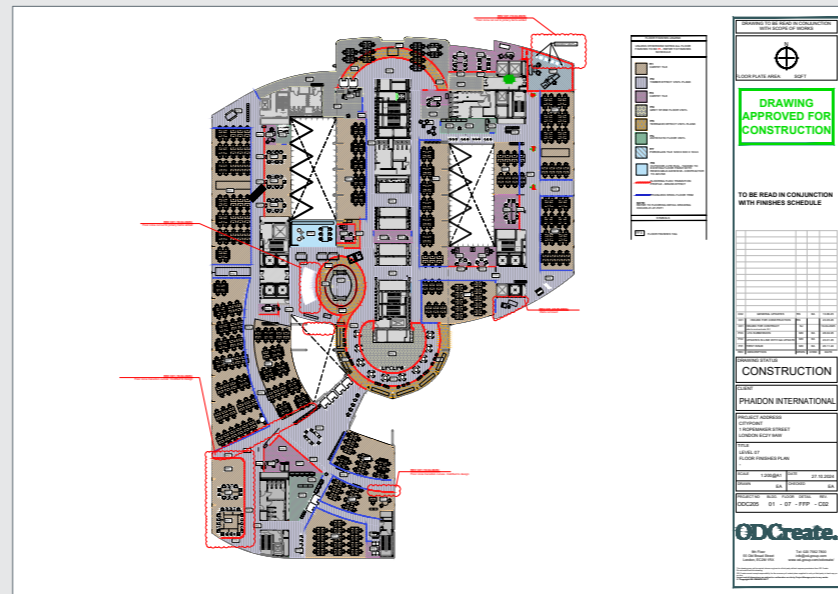
WALL FINISHES PLAN



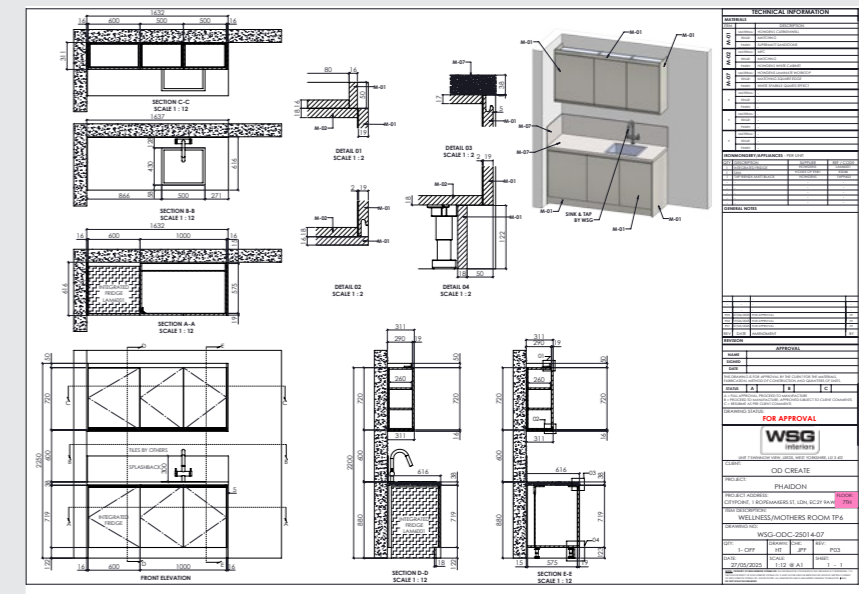
PARTITIONS SETTING OUT



FLOOR FINISHES PLAN



JOINERY DRAWING



VIDEOS

These videos are produced by our technical team and can be created using Autodesk Revit or high-quality realistic visuals. They illustrate the various stages and phases of a project or provide a complete walkthrough of the space.



CO.LAB x DESIGN

info@colabxdesign.com

+44 (0)7753 655 223